
CD61 (Clone 2f2)

Mouse Monoclonal Antibody

Specificity: Human. Others-not known

Immunogen: Recombinant protein encoding part of the external domain of human CD61

Ig Class: Mouse IgG1

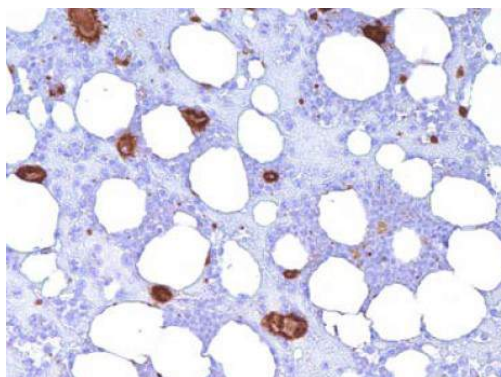
Storage: Store vial at 4°C. When stored at 2-8°C, this antibody is stable for 24 months

Staining procedures: Use formalin-fixed and paraffin-embedded sections. *Retrieval conditions:* Pretreatment of deparaffinized tissue with heat-induced epitope retrieval is recommended. *Detection methods:* Polymer anti-mouse/rabbit Ig detection system. *Working dilution:* 1:25-100. *Positive Control:* Bone marrow or tonsil. *Cellular Localization:* Cell membrane/cytoplasmic. *Intended Use:* In vitro diagnosis (IVD).

Description: CD61 (GPIIIa) is a glycoprotein found on megakaryocytes, platelets and their precursors. CD61 antigen plays a role in platelet aggregation and also as a receptor for fibrinogen, fibronectin, von Willebrand factor and vitronectin.

Comments: Clone 2f2 will prove useful in detecting neoplastic platelet precursors, normal platelets and most cases of megakaryocytic leukemia.

Supplied As: Tissue culture supernatant with 0.2% BSA and 15mM sodium azide.



Formalin-fixed, paraffin-embedded human bone marrow stained with anti-CD61 antibody using peroxidase-conjugate and DAB chromogen. Note the cytoplasmic staining of megakaryocytes

Cat. #Z2135 (1.0 ml)

ZETA Corporation
65 N 1st Ave, Ste 202C
Arcadia, CA 91006, USA
Tel: (626) 355-2053
<http://www.zeta-corp.com>



Zeta Corporation

Emergo Europe B.V.
Prinsessegracht 20
2514 AP The Hague
The Netherlands
Tel: +31 70 345 8570