
CD57 (Clone NK1) Mouse Monoclonal Antibody

Specificity: Human. Does not react with rat. Others-unknown

Immunogen: Human peripheral blood mononuclear cells

Ig Class: Mouse IgM/ κ

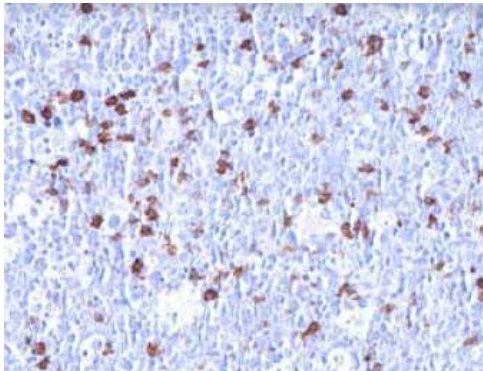
Storage: Store vial at 4°C. When stored at 2-8°C, this antibody is stable for 24 months

Staining procedures: Use formalin-fixed and paraffin-embedded sections. *Retrieval conditions:* Pretreatment of deparaffinized tissue with heat-induced epitope retrieval is recommended. *Detection methods:* Polymer anti-mouse/rabbit immunoglobulin detection system. *Working dilution:* 1:50-100. *Positive Control:* Lymph node or tonsil. *Cellular Localization:* Cell membrane. *Intended Use:* In vitro diagnosis (IVD).

Description: CD57 is expressed on a subpopulation of 15-20% of peripheral blood mononuclear cells, about 60% of NK active cells and on a subset of T cells.

Comments: Clone NK1 marks a subset of lymphocytes known as natural killer (NK) cells. Clone NK1 also reacts with a variety of cell types in non-lymphoid tissues. It stains neuroendocrine cells and their tumors.

Supplied As: Purified antibody with 0.2% BSA and 15mM sodium azide.



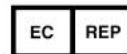
References:

1. Kared H, et al. *Cancer Immunol Immunother.* 2016; 65:441-52.
2. Nielsen CM, et al. *Front Immunol.* 2013; 4:422.
3. Sattarzadeh A, et al. *Exp Hematol Oncol.* 2015; 4:27.

Formalin-fixed, paraffin-embedded human tonsil stained with anti-CD57 antibody using peroxidase-conjugate and DAB chromogen. Note intense cell membrane staining of natural killer cells

Cat. #Z2111 (1.0 ml)

ZETA Corporation
65 N 1st Ave, Ste 202C
Arcadia, CA 91006, USA
Tel: (626) 355-2053
<http://www.zeta-corp.com>



Zeta Corporation

Emergo Europe B.V.
Prinsessegracht 20
2514 AP The Hague
The Netherlands
Tel: +31 70 345 8570