

---

## CD56 / NCAM-1 (123C3.D5)

### Mouse Monoclonal Antibody

**Specificity:** Human. Others-not known

**Immunogen:** Membrane preparation of a small cell lung carcinoma

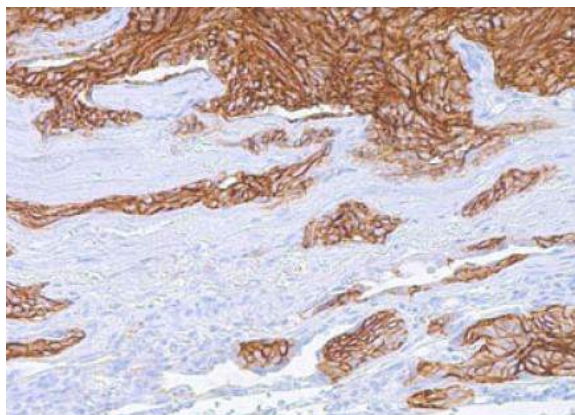
**Ig Class:** IgG1/ $\kappa$

**Storage:** Store vial at 4°C. When stored at 2-8°C, this antibody is stable for 24 months

**Staining procedures:** Use formalin-fixed and paraffin-embedded sections. *Retrieval conditions:* Pretreatment of deparaffinized tissue with heat-induced epitope retrieval is recommended. *Detection methods:* Polymer anti-mouse/rabbit Ig detection system. *Working dilution:* 1:100-200. *Positive Control:* Neuroblastoma, neuroendocrine carcinoma. *Cellular Localization:* Cell membrane. *Intended Use:* In vitro diagnosis (IVD).

**Description:** Three isoforms of neural cell adhesion molecule (NCAM) are produced by differential splicing of the RNA transcript from a single gene. The 135kDa isoform is the basic molecule which is glycosylated or sialylated to produce the mature species. NCAM (CD56) is reported to express on most neuroectodermal derived cell lines, tissues, and neoplasms such as retinoblastoma, medullblastoma, astrocytoma, and neuroblastoma. It is also expressed on some mesodermally derived tumors such as rhabdomyosarcoma and also on natural killer cells.

**Supplied As:** Purified antibody with 0.2% BSA and 15mM sodium azide.



*Formalin-fixed, paraffin-embedded human neuroendocrine carcinoma stained with anti-CD56 antibody using peroxidase-conjugate and DAB chromogen. Note cell membrane staining of tumor cells*

**Cat. #Z2038 (1.0 ml)**

---

**ZETA** Corporation  
65 N 1<sup>st</sup> Ave, Ste 202C  
Arcadia, CA 91006, USA  
Tel: (626) 355-2053  
<http://www.zeta-corp.com>



Zeta Corporation



**Emergo Europe B.V.**  
Prinsessegracht 20  
2514 AP The Hague  
The Netherlands  
Tel: +31 70 345 8570