
CD5 (Clone ZM61) Mouse Monoclonal Antibody

Specificity: Human. Others not tested

Immunogen: Recombinant human CD5 protein fragment (around aa 269-366) (exact sequence is proprietary)

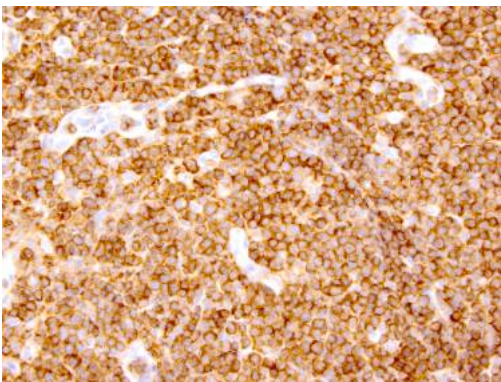
Ig Class: IgG

storage: Store vial at 4°C. When stored at 2-8°C, this antibody is stable for 24 months

Staining procedures: Use formalin-fixed and paraffin-embedded sections. *Retrieval conditions:* Pretreatment of deparaffinized tissue with heat-induced epitope retrieval is recommended. *Detection methods:* Polymer anti-mouse/rabbit Ig detection system. *Working dilution:* 1:100-200. *Positive Control:* Tonsil. *Cellular Localization:* Membrane. *Intended Use:* In vitro diagnosis (IVD).

Description: Recognizes a 67kDa transmembrane protein, which is identified as CD5. The CD5 antigen is found on 95% of thymocytes and 72% of peripheral blood lymphocytes. In lymph nodes, the main reactivity is observed in T cell areas. Anti-CD5 is a pan T-cell marker that also reacts with a range of neoplastic B-cells, e.g. chronic lymphocytic leukemia/small lymphocytic lymphoma (CLL/SLL), mantle cell lymphoma, and a subset (~10%) of diffuse large B-cell lymphoma. CD5 aberrant expression is useful in making a diagnosis of mature T-cell neoplasms. Anti-CD5 detection is diagnostic in CLL/SLL within a panel of other B-cell markers, especially one that includes anti-CD23. Anti-CD5 is also very useful in differentiating among mature small lymphoid cell malignancies. In addition, anti-CD5 can be used in distinguishing thymic carcinoma (+) from thymoma (-). Anti-CD5 does not react with granulocytes or monocytes.

Supplied As: Purified antibody with 0.2% BSA and 15mM sodium azide.



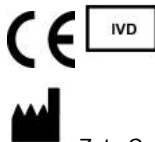
References:

1. Kasaian MT, et al. *Proc Soc Exp Bio and Med.* 1991; 197:226-41.
2. Chang CC, et al. *Mod Pathol.* 2002; 15:1051-7.
3. West RB, et al. *Am J Clin Pathol.* 2002; 117:636-43.

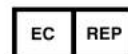
Formalin-fixed, paraffin-embedded human CLL/SLL stained with anti-CD5 antibody using peroxidase-conjugate and DAB chromogen. Note cell membrane staining of lymphoma cells

Cat. #Z2371 (1.0 ml)

ZETA Corporation
65 N 1st Ave, Ste 202C
Arcadia, CA 91006, USA
Tel: (626) 355-2053
<http://www.zeta-corp.com>



Zeta Corporation



Emergo Europe B.V.
Prinsessegracht 20
2514 AP The Hague
The Netherlands
Tel: +31 70 345 8570