
CD5 (Clone EP77) Rabbit Monoclonal Antibody

Specificity: Human. Others not tested

Immunogen: A synthetic peptide corresponding to residues in human CD5 protein

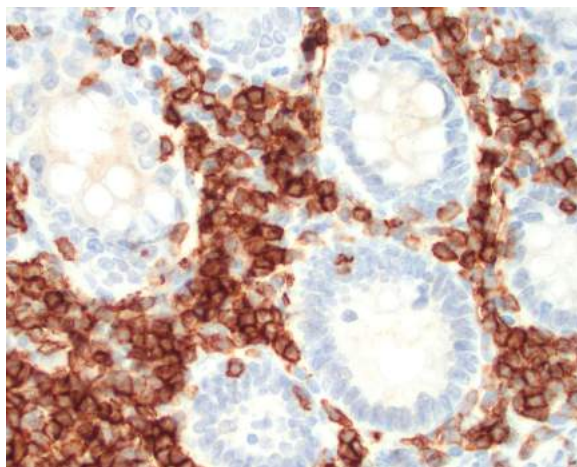
Ig Class: Rabbit IgG

storage: Store vial at 4°C. When stored at 2-8°C, this antibody is stable for 24 months

Staining procedures: Use formalin-fixed and paraffin-embedded sections. *Retrieval conditions:* Pretreatment of deparaffinized tissue with heat-induced epitope retrieval is recommended. *Detection methods:* Polymer anti-mouse/rabbit Ig detection system. *Working dilution:* 1:50-100. *Positive Control:* Tonsil. *Cellular Localization:* Membrane. *Intended Use:* In vitro diagnosis (IVD).

Description: The CD5, a transmembrane protein, is found on 95% of thymocytes and 72% of peripheral blood lymphocytes. In lymph nodes, the main reactivity is observed in T cell areas. CD5 is expressed by many T cell leukemias, lymphomas, and activated T cells. Occasionally, CD5 antigen is also expressed on a subset of B cells. Mantle cell lymphomas are CD5+ while the follicle center cell lymphomas are CD5-.

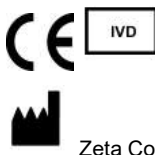
Supplied As: Tissue culture supernatant with 0.2% BSA and 15mM sodium azide.



Formalin-fixed, paraffin-embedded human cecal mucosa stained with anti-CD5 antibody using peroxidase-conjugate and DAB chromogen. Note cell membrane staining of T-cells and no stain of B-cells

Cat. #Z2272 (1.0 ml)

ZETA Corporation
65 N 1st Ave, Ste 202C
Arcadia, CA 91006, USA
Tel: (626) 355-2053
<http://www.zeta-corp.com>



Zeta Corporation



Emergo Europe B.V.
Prinsessegracht 20
2514 AP The Hague
The Netherlands
Tel: +31 70 345 8570