

---

# CD45RO (Clone UCHL-1)

## Mouse Monoclonal Antibody

**Specificity:** Human, rhesus monkey, and chimpanzee. Does not react with rat. Others-not known

**Immunogen:** Interleukin-2-dependent human T lymphocytes

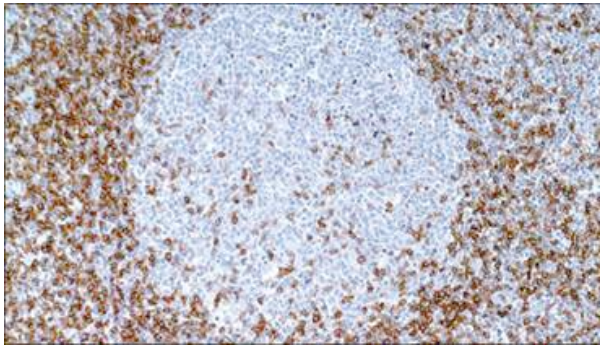
**Ig Class:** IgG<sub>2a</sub>/κ

**Storage:** Store vial at 4°C. When stored at 2-8°C, this antibody is stable for 24 months

**Staining procedures:** Use formalin-fixed and paraffin-embedded sections. *Retrieval conditions:* Pretreatment of deparaffinized tissue with heat-induced epitope retrieval is recommended. *Detection methods:* Polymer anti-mouse/rabbit IgG detection system. *Working dilution:* 1:50-100. *Positive Control:* Tonsil or lymph node. *Cellular Localization:* Membranous. *Intended Use:* In vitro diagnosis (IVD).

**Description:** CD45RO (an isoform of leukocyte common antigen) is expressed on most thymocytes, monocytes, macrophages and granulocytes. It is not expressed on normal B lymphocytes. Intrathymic T cell maturation progresses from CD45RA-/CD45RO+ to CD45RA+/CD45RO-; while peripheral T cell maturation progresses from CD45RA+/CD45RO- to CD45RA-/CD45RO+. UCHL-1 reacts with mature activated T cells, most thymocytes, and a sub-population of resting T-cells within both CD4 and CD8 subsets. Shows no reactivity with normal B or natural killer cells, but reacts with granulocytes and monocytes. It rarely stains B cell lymphomas.

**Supplied As:** Purified antibody with 0.2% BSA and 15mM sodium azide.

**References:**

1. Smith SH, et al. *Histopathology*. 1991; 19:419-24.
2. Falini B, et al. *Hum Pathol*. 1990; 21:624-9.
3. Koch AE, et al. *J Clin Immunol*. 1990; 10:192-9.

*Formalin-fixed, paraffin-embedded human lymph node stained with anti-CD45RO antibody using peroxidase-conjugate and DAB chromogen. Note cell membrane staining of T lymphocytes*

**Cat. #Z2036 (1.0 ml)**

---

**ZETA Corporation**  
65 N 1<sup>st</sup> Ave, Ste 202C  
Arcadia, CA 91006, USA  
Tel: (626) 355-2053  
<http://www.zeta-corp.com>



Zeta Corporation



**Emergo Europe B.V.**  
Prinsessegracht 20  
2514 AP The Hague  
The Netherlands  
Tel: +31 70 345 8570