
CD45/RB (LCA) (Clone 2B11+PD7/26)

Mouse Monoclonal Antibodies

Specificity: Human. Does not react with rat and dog. Others-not known

Immunogen: PD7/26/16: human peripheral blood lymphocytes maintained in T cell growth factor. 2B11: isolated neoplastic cells from T cell lymphoma

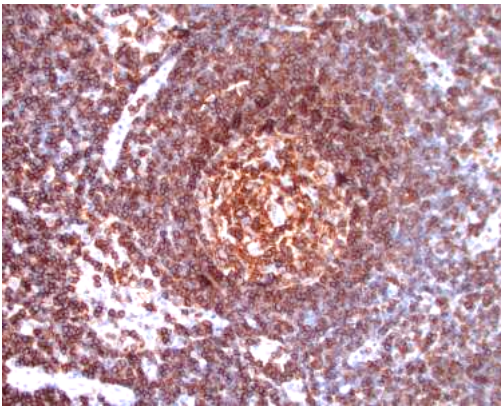
Ig Class: Mouse IgG1/IgG1/κ

Storage: Store vial at 4°C. When stored at 2-8°C, this antibody is stable for 24 months

Staining procedures: Use formalin-fixed and paraffin-embedded sections. *Retrieval conditions:* Pretreatment of deparaffinized tissue with heat-induced epitope retrieval is recommended. *Detection methods:* Polymer anti-mouse/rabbit Ig detection system. *Working dilution:* 1:100-200; *Positive Control:* Tonsil or lymph node. *Cellular Localization:* Cell membrane. *Intended Use:* In vitro diagnosis (IVD).

Description: CD45 leukocyte common antigen (LCA) belongs to the family of at least four isoforms of membrane glycoproteins (220, 205, 190, 180kDa) expressed on hematopoietic cell lines but absent on non-hematopoietic cell lines, normal and malignant non-hematopoietic tissues. The intracellular portion of these molecules have protein phosphatase activity and are involved in regulation of transmembrane signals. Antibody to CD45 is useful in differential identification of lymphoid tumors from non-hematopoietic undifferentiated neoplasms.

Supplied As: Purified antibody with with 0.2% BSA and 15mM sodium azide.



References:

1. Mason DY. *Am J Pathol.* 1987; 128:1-4.
2. Kurtin PJ, et al. *Hum Pathol.* 1985; 16:353-65.
3. Saxena, A et al. *Am J Clin Pathol* 1999; 112:495-512.

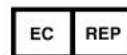
Formalin-fixed, paraffin-embedded human lymph node stained with anti-CD45 (LCA) antibody using peroxidase-conjugate and DAB chromogen. Note cell membrane staining of B- and T-lymphocytes

Cat. #Z2093 (1.0 ml)

ZETA Corporation
65 N 1st Ave, Ste 202C
Arcadia, CA 91006, USA
Tel: (626) 355-2053
<http://www.zeta-corp.com>



Zeta Corporation



Emergo Europe B.V.
Prinsessegracht 20
2514 AP The Hague
The Netherlands
Tel: +31 70 345 8570