
CD45RA (Clone 4KB5)

Mouse Monoclonal Antibody

Specificity: Human. Others-not known

Immunogen: Hairy cell leukemia cells

Ig Class: Mouse IgG1/κ

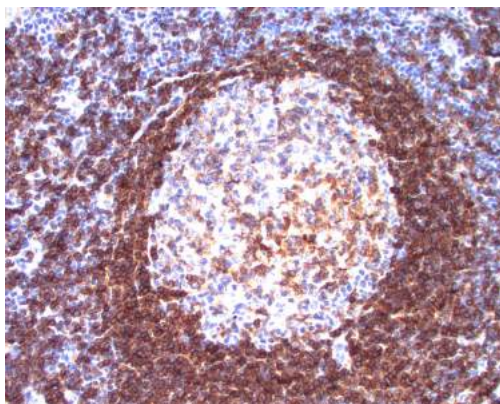
Storage: Store vial at 4°C. When stored at 2-8°C, this antibody is stable for 24 months

Staining procedures: Use formalin-fixed and paraffin-embedded sections. *Retrieval conditions:* Pretreatment of deparaffinized tissue with heat-induced epitope retrieval is recommended. *Detection methods:* Polymer anti-mouse/rabbit Ig detection system. *Working dilution:* 1:50-100. *Positive Control:* Lymph node or tonsil or lymph node. *Cellular Localization:* Cell membrane. *Intended Use:* In vitro diagnosis (IVD).

Description: CD45 or Leukocyte Common Antigen (LCA/T200) belongs to a family of membrane sialoglycoproteins with MW of 180kDa-220kDa. Human CD45 contains three exons which encode peptide segments designated A, B and C, respectively. The differential splicing of the exons generates various isoforms. CD45RA is a single chain glycoprotein. It is expressed on approximately 40-50% of peripheral CD4+ T-cells, 50% of peripheral CD8+ T-cells, B-cells, and leukemic B-cell lines. T-cells expressing CD45RA and CD45RO define complementary, predominantly non-overlapping populations of resting peripheral T-cells. CD45RA are naive or virgin T-cells while, T-cells expressing CD45RO are memory T-cells.

Comments: Clone 4KB4 is useful in study on the subpopulation of CD4+ or CD8+ T-cells. It can especially be used to differentiate T-cell lymphomas (CD45RO+) from B cell lymphomas (CD45RA+).

Supplied As: Purified antibody with 0.2% BSA and 15mM sodium azide.



Formalin-fixed, paraffin-embedded human lymph node stained with anti-CD45RA antibody using peroxidase-conjugate and DAB chromogen. Note the membrane staining of B-cells in mantle (strong) and in follicle (weak)

Cat. #Z2034 (1.0 ml)

ZETA Corporation
65 N 1st Ave, Ste 202C
Arcadia, CA 91006, USA
Tel: (626) 355-2053
<http://www.zeta-corp.com>



Zeta Corporation

Emergo Europe B.V.
Prinsessegracht 20
2514 AP The Hague
The Netherlands
Tel: +31 70 345 8570