
CD44std (Clone SP37)

Rabbit Monoclonal Antibody

Specificity: Human. Others-not known

Immunogen: Synthetic peptide corresponding to human CD44

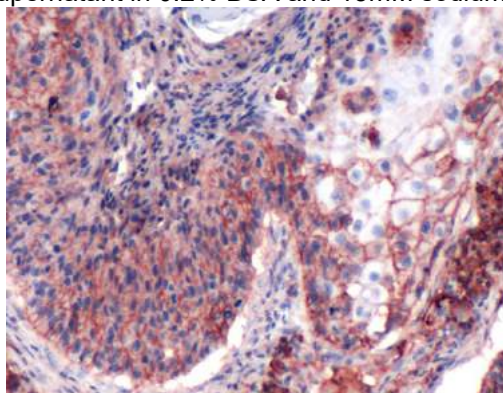
Ig Class: Rabbit IgG

Storage: Store vial at 4°C. When stored at 2-8°C, this antibody is stable for 24 months

Staining procedures: Use formalin-fixed and paraffin-embedded sections. *Retrieval conditions:* Pretreatment of deparaffinized tissue with heat-induced epitope retrieval is recommended. *Detection methods:* Polymer anti-mouse/rabbit Ig detection system. *Working dilution:* 1:50. *Positive Control:* Colon carcinoma. *Cellular Localization:* Cell membrane. *Intended Use:* In Vireo Diagnosis (IVD).

Description: CD44 variant 6 is a cell surface glycoprotein expressed on lymphocytes, monocytes, and granulocytes. The CD44 molecule belongs to a family of cellular adhesion molecule found on a wide range of normal and malignant cells in epithelial, mesothelial and hematopoietic tissues. CD44 is a single gene with 20 exons, of which 10 are normally expressed to encode the basic CD44 (H-CAM) molecule. The additional 10 exons (v1 to v10) are only expressed by alternative splicing of the nuclear RNA. The expression of specific cell adhesion molecule CD44 splice variants has been shown to be associated with metastasis and poor prognosis in certain human malignancies, such as breast cancer.

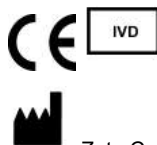
Supplied As: Tissue culture supernatant in 0.2% BSA and 15mM sodium azide.



Formalin-fixed, paraffin-embedded human esophageal adenocarcinoma stained with anti-CD44 using peroxidase-conjugate and AEC chromogen. Note the cell membrane staining of tumor cells

Cat. #Z2080 (1.0 ml)

ZETA Corporation
65 N 1st Ave, Ste 202C
Arcadia, CA 91006, USA
Tel: (626) 355-2053
<http://www.zeta-corp.com>



Zeta Corporation



Emergo Europe B.V.
Prinsessegracht 20
2514 AP The Hague
The Netherlands
Tel: +31 70 345 8570