

---

## CD44std (Clone EP44)

### Rabbit Monoclonal Antibody

**Specificity:** Human. Others-not known

**Immunogen:** Synthetic peptide within Human CD44 aa 150-250

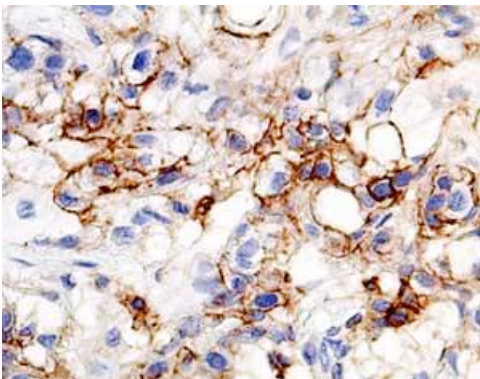
**Ig Class:** Rabbit IgG

**Storage:** Store vial at 4°C. When stored at 2-8°C, this antibody is stable for 24 months

**Staining procedures:** Use formalin-fixed and paraffin-embedded sections. *Retrieval conditions:* Pretreatment of deparaffinized tissue with heat-induced epitope retrieval is recommended. *Detection methods:* Polymer anti-mouse/rabbit Ig detection system. *Working dilution:* 1:50. *Positive Control:* Colon carcinoma. *Cellular Localization:* Cell membrane. *Intended Use:* In Vireo Diagnosis (IVD).

**Description:** CD44 variant 6 is a cell surface glycoprotein expressed on lymphocytes, monocytes, and granulocytes. The CD44 molecule belongs to a family of cellular adhesion molecule found on a wide range of normal and malignant cells in epithelial, mesothelial and hematopoietic tissues. CD44 is a single gene with 20 exons, of which 10 are normally expressed to encode the basic CD44 (H-CAM) molecule. The additional 10 exons (v1 to v10) are only expressed by alternative splicing of the nuclear RNA. The expression of specific cell adhesion molecule CD44 splice variants has been shown to be associated with metastasis and poor prognosis in certain human malignancies, such as breast cancer.

**Supplied As:** Purified antibody with 0.2% BSA and 15mM sodium azide.



#### References:

1. East JA, et al. *Eur J Cancer*. 1993; 29A:1921-2.
2. Gadalla HA, et al. *BJU Int*. 2004; 93:151-5.
3. McKenney JK, et al. *Am J Surg Pathol*. 2001; 25:1074-8.

*Formalin-fixed, paraffin-embedded human breast adenocarcinoma stained with anti-CD44 using peroxidase-conjugate and AEC chromogen. Note the cell membrane staining of tumor cells*

Cat. #Z2528 (1.0 ml)

---

**ZETA** Corporation  
65 N 1<sup>st</sup> Ave, Ste 202C  
Arcadia, CA 91006, USA  
Tel: (626) 355-2053  
<http://www.zeta-corp.com>



Zeta Corporation



**Emergo Europe B.V.**  
Prinsessegracht 20  
2514 AP The Hague  
The Netherlands  
Tel: +31 70 345 8570