
CD43 (Clone DF-T1)

Mouse Monoclonal Antibody

Specificity: Human. Does not react with rat. Others-not tested

Immunogen: Stimulated human leukocytes

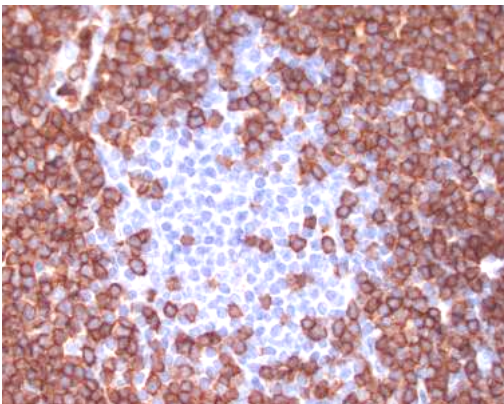
Ig Class: Mouse IgG1

Storage: Store vial at 4°C. When stored at 2-8°C, this antibody is stable for 24 months

Staining procedures: Use formalin-fixed and paraffin-embedded sections. *Retrieval conditions:* Pretreatment of deparaffinized tissue with heat-induced epitope retrieval is recommended. *Detection methods:* Polymer anti-mouse/rabbit Ig detection system. *Working dilution:* 1:100. *Positive Control:* Tonsil, CLL/SLL, or lymph node. *Cellular Localization:* Cell membrane. *Intended Use:* In vitro diagnosis (IVD).

Description: CD43 (leukosialin, sialophorin, or leukocyte sialoglycoprotein) is a cell surface glycoprotein which is expressed on all thymocytes and T-cells. CD43 is involved in activation of T cells, B cells, NK cells, and monocytes.

Supplied As: Purified antibody with with 0.2% BSA and 15mM sodium azide.



References:

1. Leong AS-Y, et al. *Greenwich Medical Media*. London. 2003.
2. Dabbs DJ. *Diagnostitc Immunohistochemistry*. Third Edition. Saunders. 2006.

Formalin-fixed, paraffin-embedded human lymph node stained with anti-CD43 antibody using peroxidase-conjugate and DAB chromogen. Note the cell membrane staining of perifollicular T-cells

Cat. #Z2032 (1.0 ml)

ZETA Corporation
65 N 1st Ave, Ste 202C
Arcadia, CA 91006, USA
Tel: (626) 355-2053
<http://www.zeta-corp.com>



Zeta Corporation



Emergo Europe B.V.
Prinsessegracht 20
2514 AP The Hague
The Netherlands
Tel: +31 70 345 8570