

---

## CD43 (Clone DF-T1)

### Mouse Monoclonal Antibody

**Specificity:** Human. Does not react with rat. Others-not tested

**Immunogen:** Stimulated human leukocytes

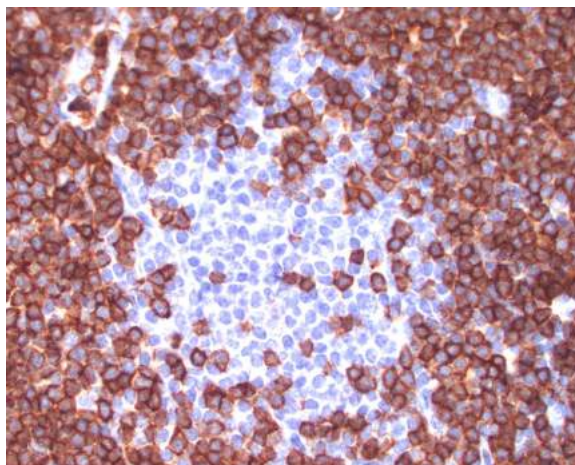
**Ig Class:** Mouse IgG1

**Storage:** Store vial at 4°C. When stored at 2-8°C, this antibody is stable for 24 months

**Staining procedures:** Use formalin-fixed and paraffin-embedded sections. *Retrieval conditions:* Pretreatment of deparaffinized tissue with heat-induced epitope retrieval is recommended. *Detection methods:* Polymer anti-mouse/rabbit Ig detection system. *Working dilution:* 1:100. *Positive Control:* Tonsil, CLL/SLL, or lymph node. *Cellular Localization:* Cell membrane. *Intended Use:* In vitro diagnosis (IVD).

**Description:** CD43 (leukosialin, sialophorin, or leukocyte sialoglycoprotein) is a cell surface glycoprotein which is expressed on all thymocytes and T-cells. CD43 is involved in activation of T cells, B cells, NK cells, and monocytes.

**Supplied As:** Tissue culture supernatant with 0.2% BSA and 15mM sodium azide.

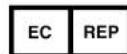


Formalin-fixed, paraffin-embedded human lymph node stained with anti-CD43 antibody using peroxidase-conjugate and DAB chromogen. Note the cell membrane staining of perifollicular T-cells

Cat. #Z2032 (1.0 ml)

---

**ZETA** Corporation  
65 N 1<sup>st</sup> Ave, Ste 202C  
Arcadia, CA 91006, USA  
Tel: (626) 355-2053  
<http://www.zeta-corp.com>



Zeta Corporation

**Emergo Europe B.V.**  
Prinsessegracht 20  
2514 AP The Hague  
The Netherlands  
Tel: +31 70 345 8570