
CD4 (Clone EP204) Rabbit Monoclonal Antibody

Specificity: Human. Others-not tested

Immunogen: A synthetic peptide corresponding to residues of human CD4 protein

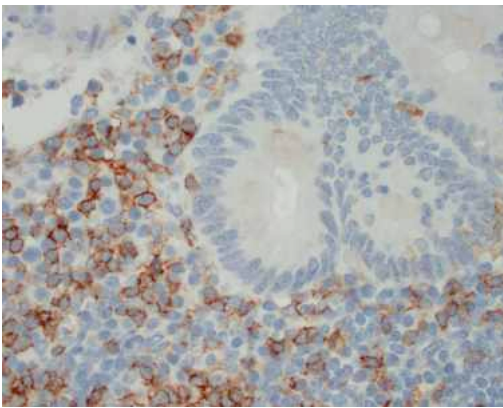
Ig Class: Rabbit IgG

Storage: Store vial at 4°C. When stored at 2-8°C, this antibody is stable for 24 months

Staining procedures: Use formalin-fixed and paraffin-embedded sections. *Retrieval conditions:* Pretreatment of deparaffinized tissue with heat-induced epitope retrieval is recommended. *Detection methods:* Polymer anti-mouse/rabbit Ig detection system. *Working dilution:* 1:50-100. *Positive Control:* Tonsil or cecum. *Cellular Localization:* Membrane. *Intended Use:* In Vitro Diagnosis (IVD).

Description: CD4, a single chain transmembrane glycoprotein, is found on a T cell subset (helper/inducer) representing 45% of peripheral blood lymphocytes. It is also present on 80% of thymocytes and at a lower level on monocytes. It is involved in recognition of antigen presented along with MHC class II by APCs. It serves as receptor for HIV.

Supplied As: Purified antibody with 0.2% BSA and 15mM sodium azide.



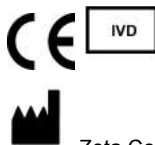
References:

1. Akiyama T, et al. *Pathol Int.* 2008; 58:626-34.
2. Garcia-Herrera A, et al. *J Clin Oncol.* 2008; 26:3364-71.

Formalin-fixed, paraffin-embedded human cecal mucosa stained with anti-CD4 using peroxidase-conjugate and DAB chromogen. Note cell membrane staining of T-cells cells

Cat. #Z2273 (1.0 ml)

ZETA Corporation
65 N 1st Ave, Ste 202C
Arcadia, CA 91006, USA
Tel: (626) 355-2053
<http://www.zeta-corp.com>



Zeta Corporation



Emergo Europe B.V.
Prinsessegracht 20
2514 AP The Hague
The Netherlands
Tel: +31 70 345 8570