
CD38 (Clone EP135) Rabbit Monoclonal Antibody

Specificity: Human. Others not known

Immunogen: Synthetic peptide within Human CD38 (C terminal)

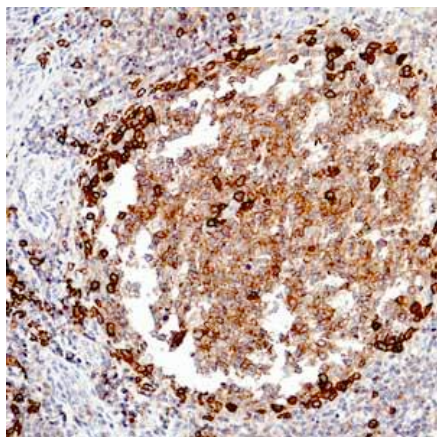
Ig Class: Rabbit IgG

Storage: Store vial at 4°C. When stored at 2-8°C, this antibody is stable for 24 months

Staining procedures: Use formalin-fixed and paraffin-embedded sections. *Retrieval conditions:* Pretreatment of deparaffinized tissue with heat-induced epitope retrieval is recommended. *Detection methods:* Polymer anti-mouse/rabbit Ig detection system. *Working dilution:* 1:50; *Positive Control:* Tonsil. *Cellular Localization:* Cytoplasmic. *Intended Use:* In Vitro Diagnosis (IVD).

Description: CD38 is a transmembrane protein that is highly expressed on thymocytes. It is also present on activated T-cells and terminally differentiated B-cells (plasma cells). Other reactive cells include NK cells, monocytes, macrophages and dendritic cells. CD38 may be detected on cells from multiple myeloma, ALL (B and T) and some AML.

Supplied As: Purified antibody with 0.2% BSA and 15mM sodium azide.



References:

1. Martin F et al. *Nat Rev Immunol.* 2002; 2:323-35.
2. Dono M, et al. *J Immunol.* 2000; 164:5596-5604.
3. Malavasi F, et al. *Physiol Rev.* 2008; 88:841-86.

Formalin-fixed, paraffin-embedded human tonsil stained with anti-CD38 antibody using peroxidase-conjugate and DAB chromogen. Note cytoplasmic staining of plasma cells

Cat. #Z2527 (1.0 ml)

ZETA Corporation
65 N 1st Ave, Ste 202C
Arcadia, CA 91006, USA
Tel: (626) 355-2053
<http://www.zeta-corp.com>



Zeta Corporation



Emergo Europe B.V.
Prinsessegracht 20
2514 AP The Hague
The Netherlands
Tel: +31 70 345 8570