
CD35 (Clone ZM58) Mouse Monoclonal Antibody

Specificity: Human

Immunogen: Recombinant human CR1 protein

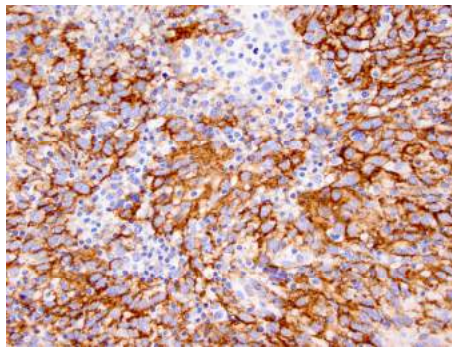
Ig Class: IgG1/κ

Storage: Store vial at 4° C. When stored at 2-8°C, this antibody is stable for 24 months

Staining procedures: Use formalin-fixed and paraffin-embedded sections. *Retrieval conditions:* Pretreatment of deparaffinized tissue with heat-induced epitope retrieval is recommended. *Detection methods:* Polymer anti-mouse/rabbit Ig detection system. *Working dilution:* 1:100-200. *Control:* Tonsil. *Cellular Localization:* Cell membrane. *Intended Use:* In vitro diagnosis (IVD).

Description: Recognizes a protein of 210-220kDa, which is identified as the complement receptor 1 (CR1)/CD35. This MAb does not block CR1 activity. It is highly specific to CR1 and shows no cross-reaction with CR2. The primary function of CR1 is to serve as the cellular receptor for C3b and C4b, the most important components of the complement system leading to clearance of foreign macromolecules. The Knops blood group system is a system of antigens located on this protein. Follicular dendritic cells (FDC) are restricted to the B-cell regions of secondary lymphoid follicles. They are CD21+/CD35+/CD1a-. This MAb labels follicular dendritic cells and follicular dendritic cell sarcoma.

Supplied As: Tissue culture supernatant with 0.2% BSA and 15mM sodium azide.



Formalin-fixed, paraffin-embedded human follicular dendritic cell sarcoma stained with anti-CD35 antibody using peroxidase-conjugate and DAB chromogen. Note staining of follicular dendritic tumor cells

Cat. #Z2368 (1.0 ml)

ZETA Corporation
65 N 1st Ave, Ste 202C
Arcadia, CA 91006, USA
Tel: (626) 355-2053
<http://www.zeta-corp.com>



Zeta Corporation



Emergo Europe B.V.
Prinsessegracht 20
2514 AP The Hague
The Netherlands
Tel: +31 70 345 8570