
CD35 (Clone EP197) Rabbit Monoclonal Antibody

Specificity: Human

Immunogen: Synthetic peptide, corresponding to amino acid residues at the C-terminus of Human CD35

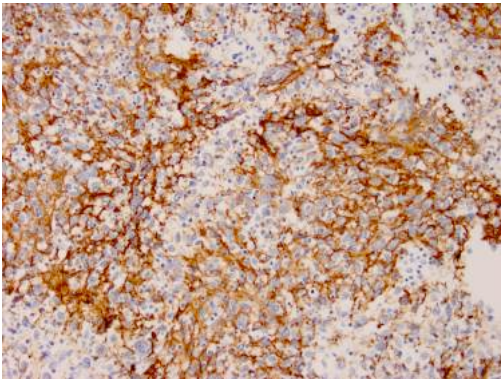
Ig Class: IgG

Storage: Store vial at 4°C. When stored at 2-8°C, this antibody is stable for 24 months

Staining procedures: Use formalin-fixed and paraffin-embedded sections. *Retrieval conditions:* Digesting tissue section with Protease XXXV at room temperature for 30 minutes. *Working dilution:* 1:50-100. *Detection methods:* ZealView™ Plus Poly-HRP-Anti-Mouse/Rabbit/Rat Ig Detection System. *Positive Control:* Tonsil. *Cellular Localization:* Cell membrane. *Intended Use:* In vitro diagnosis (IVD).

Description: CD35, also named as erythrocyte complement receptor 1 (CR1), is a member of the complement activation (RCA) family and is located in the 'cluster RCA' region of chromosome 1. CD35 mediates cellular binding to particles and immune complexes that have activated complement. CD35 is present on erythrocytes, various leukocytes and renal glomerular podocytes. In addition, plasma contains a soluble form of CR1 (Scr1). CD35 also can be detected on follicular dendritic cells. It is a marker for the diagnosis of follicular dendritic cell sarcoma. This antibody labels dendritic cells in tonsil and spleen and glomerular podocytes in kidney.

Supplied As: Purified antibody with 0.2% BSA and 15mM sodium azide.



References:

1. Pileri SA, et al. *Histopathology*. 2002; 41:1-29.
2. Biddle DA, et al. *Mod Pathol*. 2002; 15:50-8.
3. Cheuk W, et al. *Am J Surg Pathol*. 200; 25:721-31.

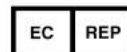
Formalin-fixed, paraffin-embedded human follicular dendritic cell tumor stained with anti-CD35 antibody using peroxidase-conjugate and DAB chromogen. Note the cytoplasmic staining of tumor cells

Cat. #Z2241 (1.0 ml)

ZETA Corporation
65 N 1st Ave, Ste 202C
Arcadia, CA 91006, USA
Tel: (626) 355-2053
<http://www.zeta-corp.com>



Zeta Corporation



Emergo Europe B.V.
Prinsessegracht 20
2514 AP The Hague
The Netherlands
Tel: +31 70 345 8570