
CD31 (Clone JC70A) Mouse Monoclonal Antibody

Specificity: Human. Does not react with rat and pig. Others-not tested

Immunogen: Preparation of a spleen from a patient with hairy cell leukemia

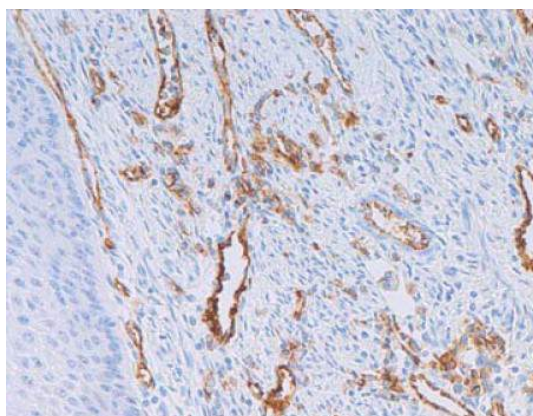
Ig Class: IgG₁/κ

Storage: Store vial at 4°C. When stored at 2-8°C, this antibody is stable for 24 months

Staining procedures: Use formalin-fixed and paraffin-embedded sections. *Retrieval conditions:* Pretreatment of deparaffinized tissue with heat-induced epitope retrieval is recommended. *Detection methods:* Polymer anti-mouse/rabbit Ig detection system. *Working dilution:* 1:50-100. *Positive Control:* Placenta. *Cellular Localization:* Cell membrane. *Intended Use:* In vitro diagnosis (IVD).

Description: CD31 is a glycoprotein expressed on endothelial cells and in platelets. It is known to be involved in cell signaling and cell adhesion. JC/70A reacts with endothelial cells in normal tissues and in benign and malignant proliferations.¹ In cryostat sections and blood smears the antibody also stains megakaryocytes, platelets and occasionally plasma cells.¹ It reacts weakly with mantle zone B cells, peripheral T cells, and neutrophils. Antibody to CD31 is of value in the study of benign and malignant vascular tumors. Staining for CD31 has also been used to measure angiogenesis, which reportedly predicts tumor recurrence.

Supplied As: Purified antibody in 0.2% BSA and 15mM sodium azide.



Formalin-fixed, paraffin-embedded human skin stained with anti-CD31 antibody using peroxidase-conjugate and DAB chromogen. Note membranous staining of vascular endothelial cells

Cat. #Z2136 (1.0 ml)