

## CD30 (Clone Ber-H2) Mouse Monoclonal Antibody

**Specificity:** Human. Others-not tested.

**Immunogen:** Co cell line established from a patient with Hodgkin's disease of T-cell lineage

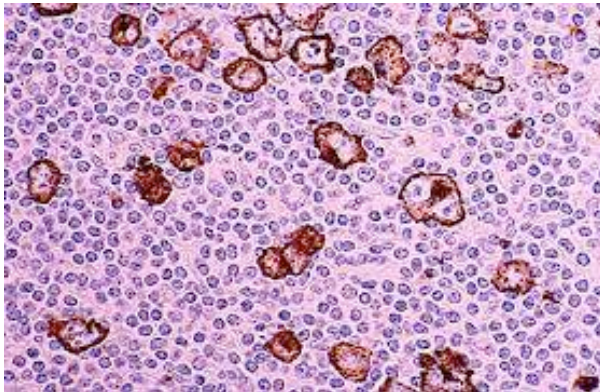
**Ig Class:** IgG<sub>1</sub>/κ

**Storage:** Store vial at 4°C. When stored at 2-8°C, this antibody is stable for 24 months

**Staining procedures:** Use formalin-fixed and paraffin-embedded sections. *Retrieval conditions:* Pretreatment of deparaffinized tissue with heat-induced epitope retrieval is recommended. *Detection methods:* Polymer anti-mouse/rabbit Ig detection system. *Working dilution:* 1:100-200. *Positive Control:* Hodgkin's lymphoma or anaplastic large cell lymphoma. *Cellular Localization:* Cell membrane and cytoplasmic. *Intended Use:* In vitro diagnosis (IVD).

**Description:** CD30, a single chain glycoprotein, is synthesized as a 90kDa precursor which is processed in the Golgi complex into a membrane-bound phosphorylated mature 105/120kDa glycoprotein. The CD30/Ki-1 antigen is expressed by mononuclear Hodgkin and multinucleated Reed-Sternberg cells in Hodgkin's disease, by the tumor cells of a majority of anaplastic large cell lymphomas, and by a varying proportion of activated T and B cells. Ber-H2 distinguishes large cell lymphomas derived from activated lymphoid cells from histiocytic malignancies and lymphomas derived from resting and precursor lymphoid cells or from anaplastic carcinomas. About one third of the Ki-1 positive lymphomas lack the leukocyte common antigen (CD45).

**Supplied As:** Purified Tissue culture supernatant in 0.2% BSA and 15mM sodium azide.



### References:

1. Schwarting R, et al. *Blood*. 1989; 74:1678-89.
2. George DH, et al. *Am J Surg Pathol*. 2003; 27:487-93.
3. Hedvat CV, et al. *Hum Pathol*. 2002; 33:968-74.

*Formalin-fixed, paraffin-embedded human Hodgkin lymphoma stained with anti-CD30 antibody using peroxidase-conjugate and DAB chromogen Note the membranous staining of Hodgkin's cells*

Cat. #Z2101 (1.0 ml); Z2101T (1mg/ml)

**ZETA** Corporation  
65 N 1<sup>st</sup> Ave, Ste 202C  
Arcadia, CA 91006, USA  
Tel: (626) 355-2053  
<http://www.zeta-corp.com>



Zeta Corporation



**Emergo Europe B.V.**  
Prinsessegracht 20  
2514 AP The Hague  
The Netherlands  
Tel: +31 70 345 8570