
CD3 (Clone ZM45)

Mouse Monoclonal Antibody

Specificity: Human, baboon, monkey, horse, dog, and cat. Others not tested

Immunogen: Synthesized human CD3 protein

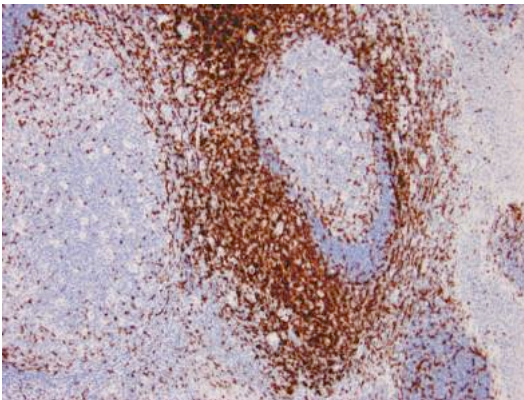
Ig Class: IgG1/κ

Storage: Store vial at 4°C. When stored at 2-8°C, this antibody is stable for 24 months

Staining procedures: Use formalin-fixed and paraffin-embedded sections. *Retrieval conditions:* Pretreatment of deparaffinized tissue with heat-induced epitope retrieval is recommended. *Detection methods:* Polymer anti-mouse/rabbit Ig detection system. *Working dilution:* 1:100-200. *Positive Control:* Tonsil. *Cellular Localization:* Membrane. *Intended Use:* In Vitro Diagnosis (IVD).

Description: This antibody reacts with the intracytoplasmic portion of the CD3 antigen expressed by T cells. It stains human T cells in both the cortex and medulla of the thymus and in peripheral lymphoid tissues. This antibody is suitable for staining normal and neoplastic T cells in formalin-fixed, paraffin-embedded tissues. A synthetic 13-mer peptide corresponding to aa 156-168 of the epsilon chain of human CD3 protein.

Supplied As: Purified antibody with 0.2% BSA and 15mM sodium azide,

**References:**

1. Beverley PC, et al. *Eur J Immunol.* 1981; 11:329-34.
2. Campana D, et al. *J Immunol.* 1987; 138:648-55.
3. Dogan A, et al. *Am J Surg Pathol.* 2003; 27:903-11.

Formalin-fixed, paraffin-embedded human lymph node stained with anti-CD3 antibody using peroxidase-conjugate and DAB chromogen. Note the membranous staining of perifollicular T-cells and no stain in B-cells

Cat. #Z2352 (1.0 ml)

ZETA Corporation
65 N 1st Ave, Ste 202C
Arcadia, CA 91006, USA
Tel: (626) 355-2053
<http://www.zeta-corp.com>



Zeta Corporation



Emergo Europe B.V.
Prinsessegracht 20
2514 AP The Hague
The Netherlands
Tel: +31 70 345 8570