

---

## CD3 (Clone ZM45)

### Mouse Monoclonal Antibody

**Specificity:** Human, baboon, monkey, horse, dog, and cat. Others not tested

**Immunogen:** Synthesized human CD3 protein

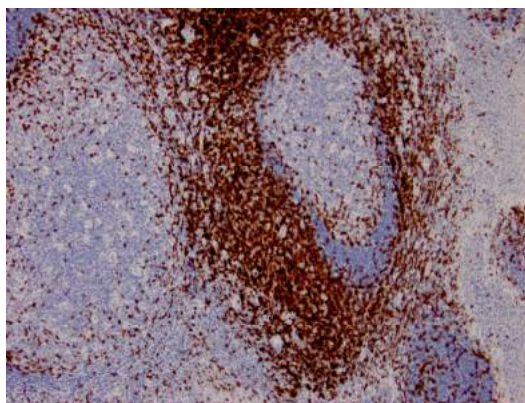
**Ig Class:** IgG1/ $\kappa$

**Storage:** Store vial at 4°C. When stored at 2-8°C, this antibody is stable for 24 months

**Staining procedures:** Use formalin-fixed and paraffin-embedded sections. *Retrieval conditions:* Pretreatment of deparaffinized tissue with heat-induced epitope retrieval is recommended. *Detection methods:* Polymer anti-mouse/rabbit Ig detection system. *Working dilution:* 1:100-200. *Positive Control:* Tonsil. *Cellular Localization:* Membrane. *Intended Use:* In Vitro Diagnosis (IVD).

**Description:** This antibody reacts with the intracytoplasmic portion of the CD3 antigen expressed by T cells. It stains human T cells in both the cortex and medulla of the thymus and in peripheral lymphoid tissues. This antibody is suitable for staining normal and neoplastic T cells in formalin-fixed, paraffin-embedded tissues. A synthetic 13-mer peptide corresponding to aa 156-168 of the epsilon chain of human CD3 protein.

**Supplied As:** Tissue culture supernatant with 0.2% BSA and 15mM sodium azide,



*Formalin-fixed, paraffin-embedded human lymph node stained with anti-CD3 antibody using peroxidase-conjugate and DAB chromogen. Note the membranous staining of perifollicular T-cells and no stain in B-cells*

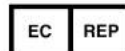
Cat. #Z2352 (1.0 ml)

---

**ZETA** Corporation  
65 N 1<sup>st</sup> Ave, Ste 202C  
Arcadia, CA 91006, USA  
Tel: (626) 355-2053  
<http://www.zeta-corp.com>



Zeta Corporation



**Emergo Europe B.V.**  
Prinsessegracht 20  
2514 AP The Hague  
The Netherlands  
Tel: +31 70 345 8570