
CD25 (Clone SP176)

Rabbit Monoclonal Antibody

Specificity: Human. Others-not tested

Immunogen: Synthetic peptide derived from the C-terminus of human CD25 protein

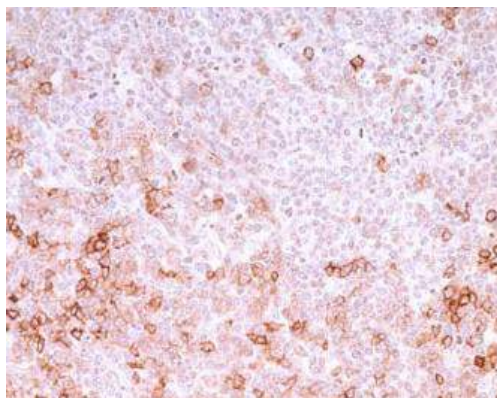
Ig Class: Rabbit IgG

Storage: Store vial at 4°C. When stored at 2-8°C, this antibody is stable for 24 months

Staining procedures: Use formalin-fixed and paraffin-embedded sections. *Retrieval conditions:* Pretreatment of deparaffinized tissue with heat-induced epitope retrieval is recommended. *Detection methods:* Polymer anti-mouse/rabbit Ig detection system. *Working dilution:* 1:70; *Positive Control:* Tonsil or lymph node. *Cellular Localization:* Membrane. *Intended Use:* In Vitro Diagnosis (RIVD).

Description: IL-2R (T-cell growth factor receptor) consists of a chain of 55kDa (also known as Tac antigen or p55 or α chain) and a p75 or β chain. IL-2R α is over-expressed on the surface of activated T cells, HTLV-1 or -2 positive T-cell lines, and moderately expressed on activated B-cells, NK-cells, and macrophages. CD25 molecule alone appears to function as a low affinity receptor and associates with CD122 (IL-2R β chain, p75) and CD132 (common γ chain) to form the high affinity IL-2 receptor complex.

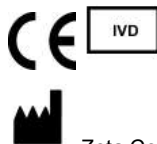
Supplied As: Purified antibody in 0.2% BSA and 15mM sodium azide.



Formalin-fixed, paraffin-embedded human tonsil stained with CD25 antibody using peroxidase-conjugate and DAB chromogen. Note membrane and membranous staining of lymphocytes

Cat. #Z2179 (1.0 ml)

ZETA Corporation
65 N 1st Ave, Ste 202C
Arcadia, CA 91006, USA
Tel: (626) 355-2053
<http://www.zeta-corp.com>



Emergo Europe B.V.
Prinsessegracht 20
2514 AP The Hague
The Netherlands
Tel: +31 70 345 8570