
CD25 (Clone EP218)

Rabbit Monoclonal Antibody

Specificity: Human. Others-not tested

Immunogen: Synthetic peptide to human CD25

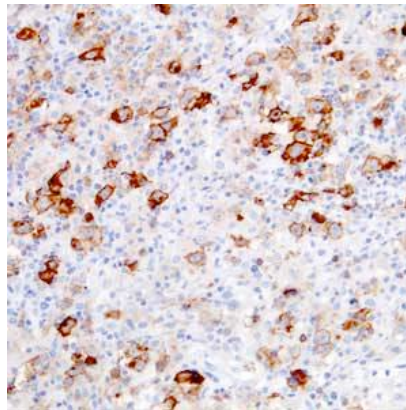
Ig Class: Rabbit IgG

Storage: Store vial at 4°C. When stored at 2-8°C, this antibody is stable for 24 months

Staining procedures: Use formalin-fixed and paraffin-embedded sections. *Retrieval conditions:* Pretreatment of deparaffinized tissue with heat-induced epitope retrieval is recommended. *Detection methods:* Polymer anti-mouse/rabbit Ig detection system. *Working dilution:* 1:50-100; *Positive Control:* Tonsil or lymph node. *Cellular Localization:* Membrane. *Intended Use:* In Vitro Diagnosis (RIVD).

Description: CD25, or interleukin 2 (IL2) receptor alpha (IL2RA), and beta (IL2RB) chains, together with the common gamma chain (IL2RG), constitute the high-affinity IL2 receptor. Homodimeric alpha chains (CD25) result in low-affinity receptor, while homodimeric beta (IL2RB) chains produce a medium-affinity receptor. Normally an integral-membrane protein, soluble CD25 has been isolated and determined to result from extracellular proteolysis. CD25 (the p55 chain of the interleukin-2 receptor) is a marker of activation for a number of cell types, including T cells, B cells, and macrophages. It also appears to be a reliable immunohistochemical marker for the discrimination of neoplastic from normal/reactive mast cells, with potential as a diagnostic tool in systemic mastocytosis. CD25 is also expressed on hairy cell leukemia.

Supplied As: Purified antibody in 0.2% BSA and 15mM sodium azide.



Formalin-fixed, paraffin-embedded hairy cell leukemia stained with CD25 antibody using peroxidase-conjugate and DAB chromogen. Note membrane and membranous staining of lymphocytes

Cat. #Z2507 (1.0 ml)

ZETA Corporation
65 N 1st Ave, Ste 202C
Arcadia, CA 91006, USA
Tel: (626) 355-2053
<http://www.zeta-corp.com>



Zeta Corporation



Emergo Europe B.V.
Prinsessegracht 20
2514 AP The Hague
The Netherlands
Tel: +31 70 345 8570