
CD22 (Clone SP104)

Rabbit Monoclonal Antibody

Reactivity: Human. Others not tested

Immunogen: Synthetic peptide corresponding to C-terminus of human CD22

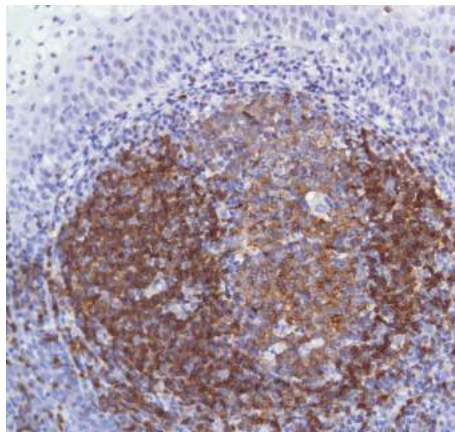
Ig Class: Rabbit IgG

Storage: Store vial at 4°C. When stored at 2-8°C, this antibody is stable for 24 months

Staining procedures: Use formalin-fixed and paraffin-embedded sections. *Retrieval conditions:* Pretreatment of deparaffinized tissue with heat-induced epitope retrieval is recommended. *Detection methods:* Polymer anti-mouse/rabbit Ig detection system. *Working dilution:* 1:50; *Positive Control:* Lymph node. *Cellular Localization:* Cytoplasmic. *Intended Use:* In vitro Diagnosis (IVD).

Description: CD22 is a type 1 integral membrane glycoprotein with molecular weight of 130 to 140kD. It is expressed in both the cytoplasm and cell membrane of B lymphocytes. CD22 antigen appears early in B cell lymphocyte differentiation at approximately the same stage as the CD19 antigen. Unlike other B cell markers, CD22 membrane expression is limited to the late differentiation stages comprised between mature B cells (CD22+) and plasma cells (CD22-). CD22 is also strongly expressed in hairy cell leukemia. There are two different isoforms of CD22. It exists predominantly as a monomer of the beta isoform but can also be found as a heterodimer composed of the beta isoform and a second, shorter isoform (CD22 alpha).

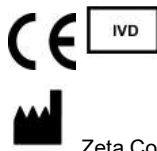
Supplied As: Purified antibody with 0.2% BSA and 15mM sodium azide.



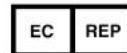
Formalin-fixed, paraffin-embedded human skin stained with anti-CD22 antibody using peroxidase-conjugate and DAB chromogen. Note cytoplasmic staining of B-lymphocytes

Cat #: Z2207 (1.0 ml)

ZETA Corporation
65 N 1st Ave, Ste 202C
Arcadia, CA 91006, USA
Tel: (626) 355-2053
<http://www.zeta-corp.com>



Zeta Corporation



Emergo Europe B.V.
Prinsessegracht 20
2514 AP The Hague
The Netherlands
Tel: +31 70 345 8570