

CD21 (Clone ZM75) Mouse Monoclonal Antibody

Specificity: Human. Others not tested

Immunogen: Recombinant human CR2 (CD21) protein fragment (around aa 44-196)

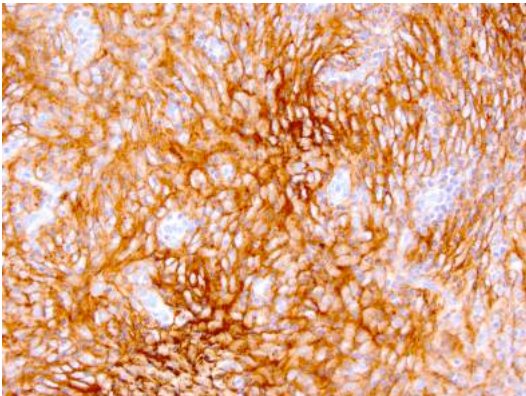
Ig Class: IgG1/ κ

Storage: Store vial at 4°C. When stored at 2-8°C, this antibody is stable for 24 months

Staining procedures: Use formalin-fixed and paraffin-embedded sections. *Retrieval conditions:* Pretreatment of deparaffinized tissue with heat-induced epitope retrieval is recommended. *Detection methods:* Polymer anti-mouse/rabbit Ig detection system. *Working dilution:* 1:100-200. *Positive Control:* Tonsil, lymph node. *Cellular Localization:* Cell membrane. *Intended Use:* In vitro Diagnosis (IVD).

Description: Recognizes a protein of 140kDa, which is identified as the complement receptor 2 (CR2) / CD21. This protein is expressed strongly on mature B cells, follicular dendritic cells and weakly on immature thymocytes and T lymphocytes. In B-cell ontogeny, CD21 appears after the pre-B-stage, is maintained during peripheral B-cell development and is lost upon terminal differentiation into plasma cells. CD21 expression is also gradually lost after stimulation of B cells in vitro. CD21 functions as receptor for C3d, C3dg and iC3b Complement components, for EBV and for IFN α . CD21 binds to CD23 and associates with CD19, CD81 and Leu13 to form a large signal-transduction complex involved in B cell activation.

Supplied As: Purified antibody with 0.2% BSA and 15mM sodium azide.



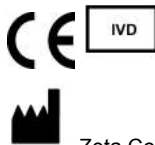
References:

1. Cheuk W, et al. *Am J Surg Pathol.* 2001; 25:721-31.
2. Pileri SA, et al. *Histopathology.* 2002; 41:1-29.
3. Biddle DA, et al. *Mod Pathol.* 2002; 15:50-58.

Formalin-fixed, paraffin-embedded human follicular dendritic cell sarcoma stained with anti-CD21 antibody using peroxidase-conjugate and DAB chromogen. Note the membrane staining of tumor cells

Cat. #Z2385 (1.0 ml)

ZETA Corporation
65 N 1st Ave, Ste 202C
Arcadia, CA 91006, USA
Tel: (626) 355-2053
<http://www.zeta-corp.com>



Zeta Corporation



Emergo Europe B.V.
Prinsessegracht 20
2514 AP The Hague
The Netherlands
Tel: +31 70 345 8570