

CD21 (Clone EP64) Rabbit Monoclonal Antibody

Specificity: Human. Others not tested

Immunogen: A synthetic peptide corresponding to residues on the C terminus of human CD21

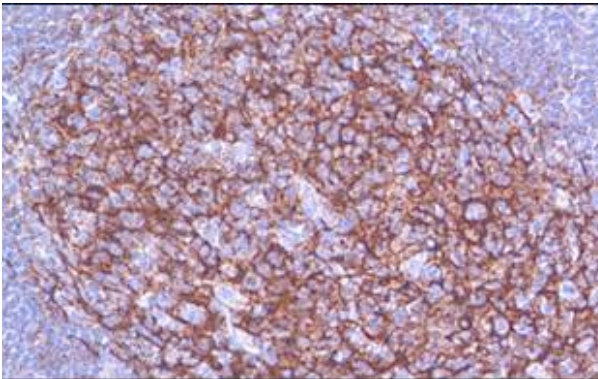
Ig Class: Rabbit IgG

Storage: Store vial at 4°C. When stored at 2-8°C, this antibody is stable for 24 months

Staining procedures: Use formalin-fixed and paraffin-embedded sections. *Retrieval conditions:* Pretreatment of deparaffinized tissue with heat-induced epitope retrieval is recommended. *Detection methods:* Polymer anti-mouse/rabbit Ig detection system. *Working dilution:* 1:50-200. *Positive Control:* Tonsil, lymph node. *Cellular Localization:* Cell membrane. *Intended Use:* In vitro Diagnosis (IVD).

Description: CD21, also known as CR2, C3d receptor and EBV receptor, is expressed strongly on mature B cells, follicular dendritic cells and weakly on immature thymocytes and T lymphocytes. In B-cell ontogeny, CD21 appears after the pre-B-stage, is maintained during peripheral B-cell development and is lost upon terminal differentiation into plasma cells. CD21 expression is also gradually lost after stimulation of B cells in vitro. CD21 functions as receptor for C3d, C3dg and iC3b Complement components, for EBV and for IFN alpha. CD21 binds to CD23 and associates with CD19, CD81 and Leu13 to form a large signal-transduction complex involved in B cell activation. most macrophage types as well as aiding further study into the function and expression of CD163 antigen itself.

Supplied As: Purified antibody with 0.2% BSA and 15mM sodium azide.



References:

1. Cheuk W, et al. *Am J Surg Pathol.* 2001; 25:721-31.
2. Pileri SA, et al. *Histopathology.* 2002; 41:1-29.
3. Biddle DA, et al. *Mod Pathol.* 2002; 15:50-58.

Formalin-fixed, paraffin-embedded human tonsil stained with anti-CD21 antibody using peroxidase-conjugate and DAB chromogen. Note the membrane staining of follicular dendritic cells and their network in a follicle

Cat. #Z2123 (1.0 ml)