

CD205(Clone EP176)

Rabbit Monoclonal Antibody

Specificity: Human

Immunogen: Synthetic peptide corresponding to residues in the intracellular domain of human CD205

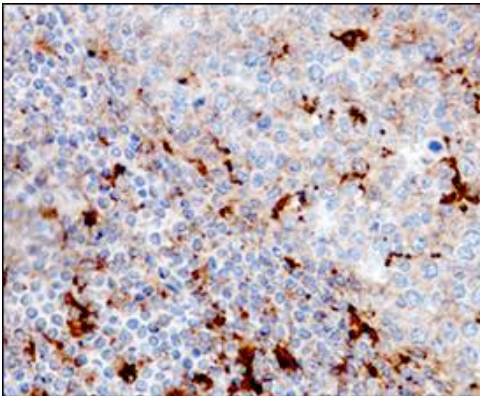
Ig Class: Rabbit IgG

Storage: Store vial at 4°C. When stored at 2-8°C, this antibody is stable for 24 months

Staining procedures: Use formalin-fixed and paraffin-embedded sections. *Retrieval conditions:* Pretreatment of deparaffinized tissue with heat-induced epitope retrieval is recommended. *Detection methods:* Polymer anti-mouse/rabbit Ig detection system. *Working dilution:* 1:50-100; *Positive Control:* Tonsil. *Cellular Localization:* Cytoplasmic. *Intended Use:* In vitro diagnosis (IVD).

Description: CD205, also named DEC-205, belongs to the macrophage mannose receptor family of C-type lectin endocytic receptors. CD205 is predominantly expressed by the thymic cortical epithelium and by dendritic cells (DC), but can also be detected at low levels in T and B-lymphocytes and several other epithelial cell types. CD205 is a novel thymic epithelial marker that is important for the positive selection process of thymocytes. It is a sensitive and specific marker for thymoma, while the sensitivity to thymic carcinoma is lower than CD5 and CD117.

Supplied As: Purified antibody with 0.2% BSA and 15mM sodium azide.



References:

1. Kim BS, et al. *Pathol Res Pract.* 2018; 214:343-349.
2. Nonaka D, et al. *Am J Surg Pathol.* 2007; 31(7):1038-44.
3. Kato M, et al. *J Biol Chem.* 2003; 278:34035-41.

Formalin-fixed, paraffin-embedded human tonsil stained with anti-CD205 antibody using peroxidase-conjugate and DAB chromogen. Note cytoplasmic staining of dendritic cells

Cat #: Z2315 (1.0 ml)

ZETA Corporation
65 N 1st Ave, Ste 202C
Arcadia, CA 91006, USA
Tel: (626) 355-2053
<http://www.zeta-corp.com>



Zeta Corporation

Emergo Europe B.V.
Prinsessegracht 20
2514 AP The Hague
The Netherlands
Tel: +31 70 345 8570