

# CD205(Clone EP176)

## Rabbit Monoclonal Antibody

**Specificity:** Human

**Immunogen:** Synthetic peptide corresponding to residues in the intracellular domain of human CD205

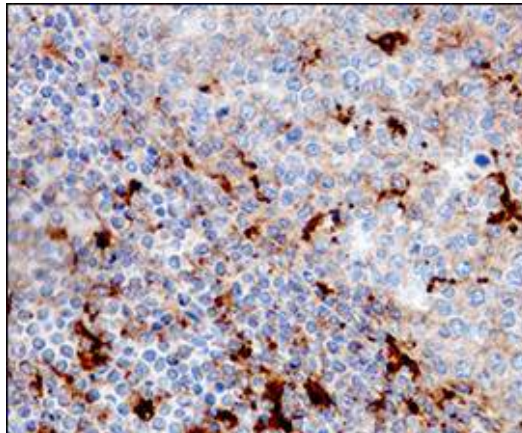
**Ig Class:** Rabbit IgG

**Storage:** Store vial at 4°C. When stored at 2-8°C, this antibody is stable for 24 months

**Staining procedures:** Use formalin-fixed and paraffin-embedded sections. *Retrieval conditions:* Pretreatment of deparaffinized tissue with heat-induced epitope retrieval is recommended. *Detection methods:* Polymer anti-mouse/rabbit Ig detection system. *Working dilution:* 1:50-100; *Positive Control:* Tonsil. *Cellular Localization:* Cytoplasmic. *Intended Use:* In vitro diagnosis (IVD).

**Description:** CD205, also named DEC-205, belongs to the macrophage mannose receptor family of C-type lectin endocytic receptors. CD205 is predominantly expressed by the thymic cortical epithelium and by dendritic cells (DC), but can also be detected at low levels in T and B-lymphocytes and several other epithelial cell types. CD205 is a novel thymic epithelial marker that is important for the positive selection process of thymocytes. It is a sensitive and specific marker for thymoma, while the sensitivity to thymic carcinoma is lower than CD5 and CD117.

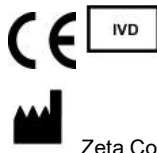
**Supplied As:** Purified antibody with 0.2% BSA and 15mM sodium azide.



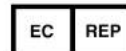
*Formalin-fixed, paraffin-embedded human tonsil stained with anti-CD205 antibody using peroxidase-conjugate and DAB chromogen. Note cytoplasmic staining of dendritic cells*

**Cat #:** Z2315 (1.0 ml)

**ZETA** Corporation  
65 N 1<sup>st</sup> Ave, Ste 202C  
Arcadia, CA 91006, USA  
Tel: (626) 355-2053  
<http://www.zeta-corp.com>



Zeta Corporation



**Emergo Europe B.V.**  
Prinsessegracht 20  
2514 AP The Hague  
The Netherlands  
Tel: +31 70 345 8570