
CD20 (Clone L26)

Mouse Monoclonal Antibody

Specificity: Human. Does not react with cow, dog, pig, and rat. Others not known

Immunogen: Human tonsil B cells

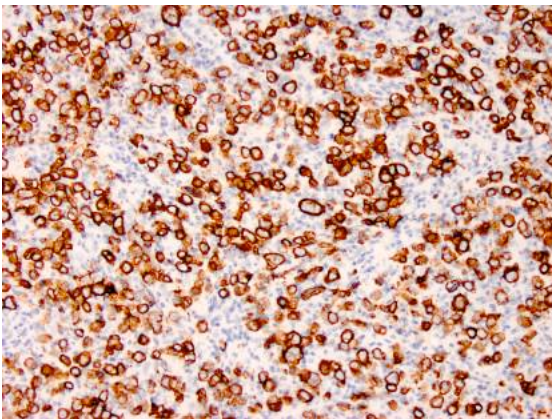
Ig Class: IgG_{2a} / κ

storage: Store vial at 4°C. When stored at 2-8°C, this antibody is stable for 24 months

Staining procedures: Use formalin-fixed and paraffin-embedded sections. *Retrieval conditions:* For formalin-fixed tissues, optimal results are obtained by pretreating tissues with heat-induced epitope retrieval using high pH target retrieval solution. *Detection methods:* Polymer anti-mouse/rabbit Ig detection system. *Working dilution:* 1:100-300. *Positive Control:* Tonsil, lymph node. *Cellular Localization:* Cell membrane/cytoplasmic. *Intended Use:* In vitro diagnosis (IVD).

Description: CD20 is a non-Ig differentiation antigen of B cells and the expression of CD20 is restricted to normal and neoplastic B cells, being absent from all other leukocytes and tissues. CD20 is the most specific B-cell marker used in paraffin immunohistochemistry. It acts as calcium channel involved in B cell activation and cell cycle progression.

Supplied As: Purified antibody with 0.2% BSA and 15mM sodium azide.



References:

1. Aguilera NS, et al. *Arch Pathol Lab Med.* 2006; 130:1772-9.
2. Barrionuevo C, et al. *Appl Immunohistochem Mol Morphol.* 2007; 15:38-44.
3. Bovenschen HJ, et al. *Br J Dermatol.* 2005; 153:72-8.

Formalin-fixed, paraffin-embedded diffuse large B cell lymphoma stained with anti-CD20 antibody using peroxidase-conjugate and DAB chromogen. Note the membrane and cytoplasmic staining of lymphoma cells

Cat. #Z2059 (1.0 ml)

ZETA Corporation
65 N 1st Ave, Ste 202C
Arcadia, CA 91006, USA
Tel: (626) 355-2053
<http://www.zeta-corp.com>



Zeta Corporation



Emergo Europe B.V.
Prinsessegracht 20
2514 AP The Hague
The Netherlands
Tel: +31 70 345 8570