

---

## CD20 (Clone L26)

### Mouse Monoclonal Antibody

**Specificity:** Human. Does not react with cow, dog, pig, and rat. Others not known

**Immunogen:** Human tonsil B cells

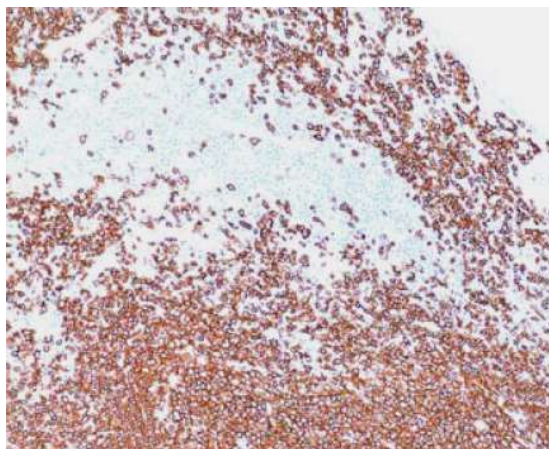
**Ig Class:** IgG<sub>2a</sub> / κ

**Storage:** Store vial at 4°C. When stored at 2-8°C, this antibody is stable for 24 months

**Staining procedures:** Use formalin-fixed and paraffin-embedded sections. *Retrieval conditions:* For formalin-fixed tissues, optimal results are obtained by pretreating tissues with heat-induced epitope retrieval using high pH target retrieval solution. *Detection methods:* Polymer anti-mouse/rabbit Ig detection system. *Working dilution:* 1:100-300. *Positive Control:* Tonsil, lymph node. *Cellular Localization:* Cell membrane/cytoplasmic. *Intended Use:* In vitro diagnosis (IVD).

**Description:** CD20 is a non-Ig differentiation antigen of B cells and the expression of CD20 is restricted to normal and neoplastic B cells, being absent from all other leukocytes and tissues. CD20 is the most specific B-cell marker used in paraffin immunohistochemistry. It acts as calcium channel involved in B cell activation and cell cycle progression.

**Supplied As:** Tissue culture supernatant with 0.2% BSA and 15mM sodium azide.



*Formalin-fixed, paraffin-embedded human lymph node stained with anti-CD20 antibody using peroxidase-conjugate and DAB chromogen. Note the membrane and cytoplasmic staining of B-cells in mantle and follicle*

**Cat. #Z2059 (1.0 ml)**

---

**ZETA** Corporation  
65 N 1<sup>st</sup> Ave, Ste 202C  
Arcadia, CA 91006, USA  
Tel: (626) 355-2053  
<http://www.zeta-corp.com>



Zeta Corporation

**Emergo Europe B.V.**  
Prinsessegracht 20  
2514 AP The Hague  
The Netherlands  
Tel: +31 70 345 8570