

---

## CD2 (Clone EP222) Rabbit Monoclonal Antibody

**Specificity:** Human. Others not-tested

**Immunogen:** Human CD2 recombinant protein

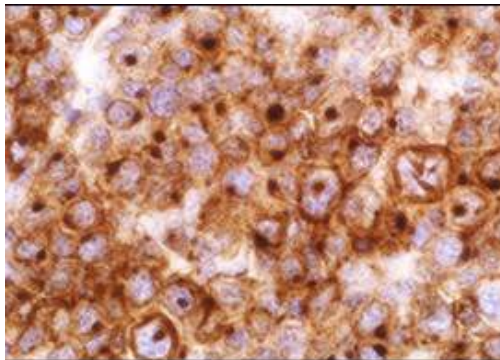
**Ig Class:** IgG

**Storage:** Store vial at 4°C. When stored at 2-8°C, this antibody is stable for 24 months

**Staining procedures:** Use formalin-fixed and paraffin-embedded sections. *Retrieval conditions:* Pretreatment of deparaffinized tissue with heat-induced epitope retrieval is recommended. *Detection methods:* Polymer anti-mouse/rabbit Ig detection system. *Working dilution:* 1:25-100. *Positive Control:* Tonsil. *Cellular Localization:* Membrane. *Intended Use:* In vitro diagnosis (IVD).

**Description:** CD2 is one of the earliest T-cell lineage restricted antigens to appear during T-cell differentiation and only rare CD2+ cells can be found in the bone marrow. Anti-CD2 is a pan-T-cell antigen marker. Anti-CD2 is therefore useful for the identification of virtually all normal T-lymphocytes. It is also very useful in the assessment of lymphoid malignancies as it is expressed in the majority of precursor and mature T-cell lymphomas and leukemias. As with other pan-T-cell antigens, CD2 may be aberrantly deleted in some neoplastic T-cell populations, especially peripheral T-cell lymphomas. When combined with anti-CD25, anti-CD2 may assist in the identification of systemic mastocytosis and mastocytic leukemia.

**Supplied As:** Purified antibody in 0.2% BSA and 15mM sodium azide.



*Formalin-fixed, paraffin-embedded human T cell lymphoma stained with anti-CD-2 antibody using peroxidase-conjugate and DAB chromogen. Note membrane and cytoplasmic staining of tumor cells*

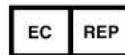
Cat. #Z2308 (1.0 ml)

---

**ZETA** Corporation  
65 N 1<sup>st</sup> Ave, Ste 202C  
Arcadia, CA 91006, USA  
Tel: (626) 355-2053  
<http://www.zeta-corp.com>



Zeta Corporation



**Emergo Europe B.V.**  
Prinsessegracht 20  
2514 AP The Hague  
The Netherlands  
Tel: +31 70 345 8570