
CD2 (Clone EP222)

Rabbit Monoclonal Antibody

Specificity: Human. Others not-tested

Immunogen: Human CD2 recombinant protein

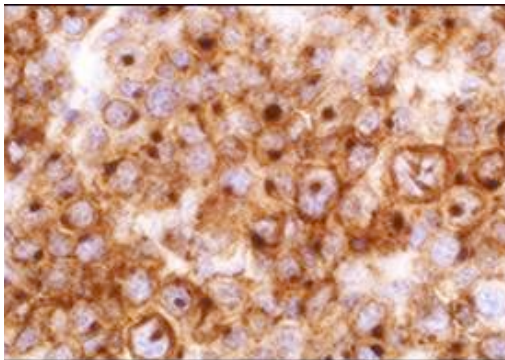
Ig Class: IgG

Storage: Store vial at 4°C. When stored at 2-8°C, this antibody is stable for 24 months

Staining procedures: Use formalin-fixed and paraffin-embedded sections. *Retrieval conditions:* Pretreatment of deparaffinized tissue with heat-induced epitope retrieval is recommended. *Detection methods:* Polymer anti-mouse/rabbit Ig detection system. *Working dilution:* 1:25-100. *Positive Control:* Tonsil. *Cellular Localization:* Membrane. *Intended Use:* In vitro diagnosis (IVD).

Description: CD2 is one of the earliest T-cell lineage restricted antigens to appear during T-cell differentiation and only rare CD2+ cells can be found in the bone marrow. Anti-CD2 is a pan-T-cell antigen marker. Anti-CD2 is therefore useful for the identification of virtually all normal T-lymphocytes. It is also very useful in the assessment of lymphoid malignancies as it is expressed in the majority of precursor and mature T-cell lymphomas and leukemias. As with other pan-T-cell antigens, CD2 may be aberrantly deleted in some neoplastic T-cell populations, especially peripheral T-cell lymphomas. When combined with anti-CD25, anti-CD2 may assist in the identification of systemic mastocytosis and mastocytic leukemia.

Supplied As: Purified antibody in 0.2% BSA and 15mM sodium azide.



Formalin-fixed, paraffin-embedded human T cell lymphoma stained with anti-CD-2 antibody using peroxidase-conjugate and DAB chromogen. Note membrane and cytoplasmic staining of tumor cells

References:

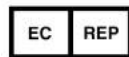
1. Aguilera NS, et al. *Arch Pathol Lab Med.* 2006; 130:1772-9.
2. Barrionuevo C, et al. *Appl Immunohistochem Mol Morphol.* 2007; 15:38-44.
3. Bovenschen HJ, et al. *Br J Dermatol.* 2005; 153:72-8.

Cat. #Z2308 (1.0 ml)

ZETA Corporation
65 N 1st Ave, Ste 202C
Arcadia, CA 91006, USA
Tel: (626) 355-2053
<http://www.zeta-corp.com>



Zeta Corporation



Emergo Europe B.V.
Prinsessegracht 20
2514 AP The Hague
The Netherlands
Tel: +31 70 345 8570