

---

# CD1a (Clone O10)

## Mouse Monoclonal Antibody

**Specificity:** Human. Others unknown

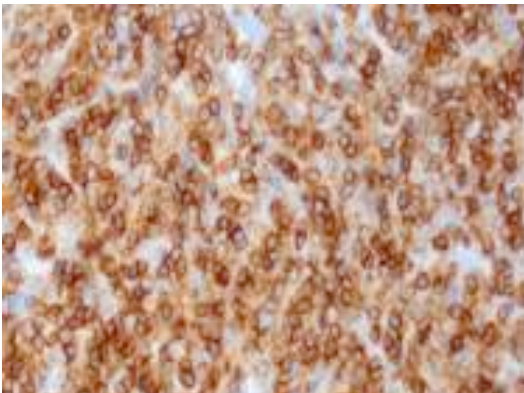
**Ig Class:** IgG<sub>1</sub>/κ

**Storage:** Store vial at 4°C. When stored at 2-8°C, this antibody is stable for 24 months

**Staining procedures:** Use formalin-fixed and paraffin-embedded sections. *Retrieval conditions:* Pretreatment of deparaffinized tissue with heat-induced epitope retrieval is recommended. *Detection methods:* Polymer anti-mouse/rabbit Ig detection system. *Working dilution:* 1:50-100. *Positive Control:* Skin or langerhans cell histiocytosis X. *Cellular Localization:* Cell membrane and cytoplasmic. *Intended Use:* In vitro Diagnosis (IVD).

**Description:** At least five CD1 genes (CD1a, b, c, d, and e) are identified. CD1 is expressed on cortical thymocytes, Langerhans cells, and dendritic cells. It is absent on mature peripheral blood T cells but intracytoplasmic expression is detected on activated T lymphocytes. CD1 proteins have been demonstrated to restrict T-cell response to non-peptide lipid and glycolipid antigens and play a role in non-classical antigen presentation. O10 detects cortical thymocytes, Langerhans cells in epidermis, dendritic cells of dermis and Langerhans cells of mucosa of tonsil. It may also detect small focal groups of lymphocytes outside the germinal centers of tonsil indicating a cross reaction with CD1b. This antibody is useful in the characterization of leukemias and lymphomas.

**Supplied As:** Purified antibody with 0.2% BSA and 15mM sodium azide.



### References:

1. Krenacs L, et al. *J Pathol.* 1993; 171:99-104.
2. Emile JF, et al. *Am J Surg Pathol.* 1995; 19:636-41.
3. Han X, et al. *Am J Clin Pathol.* 2007; 127:528-44.

*Formalin-fixed, paraffin-embedded human thymoma stained with anti-CD1a antibody using peroxidase-conjugate and DAB chromogen. Note membrane staining of tumor cells*

**Cat. #Z2096 (1.0 ml)**

---

**ZETA** Corporation  
65 N 1<sup>st</sup> Ave, Ste 202C  
Arcadia, CA 91006, USA  
Tel: (626) 355-2053  
<http://www.zeta-corp.com>



Zeta Corporation



**Emergo Europe B.V.**  
Prinsessegracht 20  
2514 AP The Hague  
The Netherlands  
Tel: +31 70 345 8570