

CD19 (Clone SP110) Rabbit Monoclonal Antibody

Specificity: Human. Others not tested

Immunogen: Synthetic peptide corresponding to C-terminus of human CD19

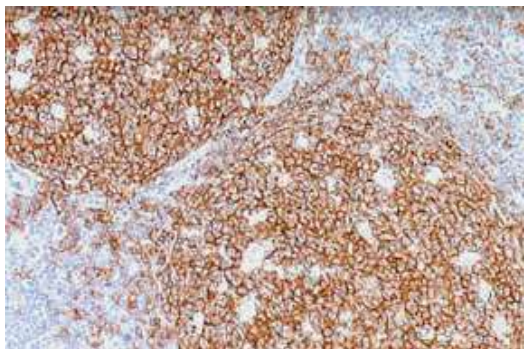
Ig Class: Rabbit IgG

Storage: Store vial at 4°C. When stored at 2-8°C, this antibody is stable for 24 months

Staining procedures: Use formalin-fixed and paraffin-embedded sections. *Retrieval conditions:* Pretreatment of deparaffinized tissue with heat-induced epitope retrieval is recommended. *Detection methods:* Polymer anti-mouse/rabbit Ig detection system. *Working dilution:* 1:100. *Positive Control:* Lymph node or tonsil. *Cellular Localization:* Membranous. *Intended Use:* In vitro diagnosis (IVD).

Description: In normal lymphoid tissue CD19 is observed in germinal centers (on both B cells and follicular dendritic cells), in mantle zone cells and in scattered cells in the interfollicular areas, with an overall immunoreactivity pattern similar to that of CD20 and CD22. However, in contrast to CD20, CD19 is also expressed in pre-B cells. CD19 positivity is seen in the vast majority of B-cell neoplasms (B-lymphoblastic lymphoma, small lymphocytic lymphoma/CLL, mantle cell lymphoma, follicular lymphoma, Burkitt lymphoma, marginal zone lymphoma, diffuse large B-cell lymphoma, T-cell-rich B-cell lymphoma, lymphoblastic lymphoma, hairy cell leukemia) and commonly at a lower intensity than normal B-cell elements. Plasma cell neoplasms are consistently negative as are T-cell neoplasms. CD19 was undetectable in 14% of diffuse large B-cell lymphomas, 30% of T-cell-rich B-cell lymphomas and 75% of post-transplant B-lymphoproliferative disease. CD19 expression is not seen in Reed-Sternberg cells of classic Hodgkin lymphoma.

Supplied As: Purified antibody tissue culture supernatant with 0.2% BSA and 15mM sodium azide.



Formalin-fixed, paraffin-embedded human lymph node stained with anti-CD19 antibody using peroxidase-conjugate and DAB chromogen. Note the membranous staining of B-cells

Cat. #Z2185 (1.0 ml)