

CD19 (Clone EP169) Rabbit Monoclonal Antibody

Specificity: Human. Others not tested

Immunogen: Synthetic peptide within human CD19 aa 300 to the C-terminus

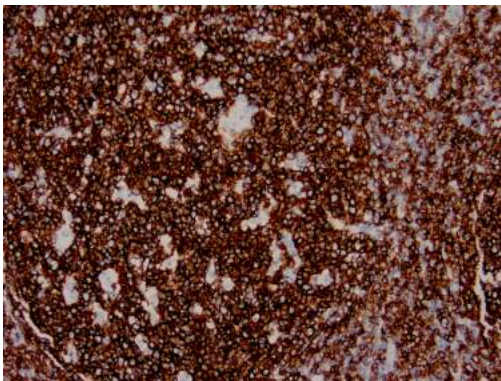
Ig Class: Rabbit IgG

Storage: Store vial at 4°C. When stored at 2-8°C, this antibody is stable for 24 months

Staining procedures: Use formalin-fixed and paraffin-embedded sections. *Retrieval conditions:* Pretreatment of deparaffinized tissue with heat-induced epitope retrieval is recommended. *Detection methods:* Polymer anti-mouse/rabbit Ig detection system. *Working dilution:* 1:50-200. *Positive Control:* Lymph node or tonsil. *Cellular Localization:* Membranous. *Intended Use:* In vitro diagnosis (IVD).

Description: CD19 is present in both normal and malignant B-cells and has long been considered to be the most reliable surface marker of this lineage over a wide range of maturational stages. In normal lymphoid tissue, CD19 is observed in germinal centers, mantle zone cells, and scattered cells in the interfollicular areas. Anti-CD19 exhibits an overall immunoreactivity pattern similar to those of the antibodies against CD20 and CD22. However, in contrast to CD20, CD19 is also expressed in immature B-cells; although recent studies have described CD19 loss in a few B-cell neoplasms.

Supplied As: Purified antibody with 0.2% BSA and 15mM sodium azide.



References:

1. Kimura M, et al. *Int J Hematol.* 2007; 85:41-8.
2. Masir N, et al. *Histopathology.* 2006; 48:239-46.
3. Greenberg SA, et al. *Neurology.* 2005; 65:1782-7.

Formalin-fixed, paraffin-embedded human lymph node stained with anti-CD19 antibody using peroxidase-conjugate and DAB chromogen. Note the membranous staining of B-cells

Cat. #Z2531 (1.0 ml)

ZETA Corporation
65 N 1st Ave, Ste 202C
Arcadia, CA 91006, USA
Tel: (626) 355-2053
<http://www.zeta-corp.com>



Zeta Corporation



Emergo Europe B.V.
Prinsessegracht 20
2514 AP The Hague
The Netherlands
Tel: +31 70 345 8570