

---

## CD163 (Clone EP324)

### Rabbit Monoclonal Antibody

**Specificity:** Human. Others not tested

**Immunogen:** Recombinant fragment within Mouse CD163 aa 1-250

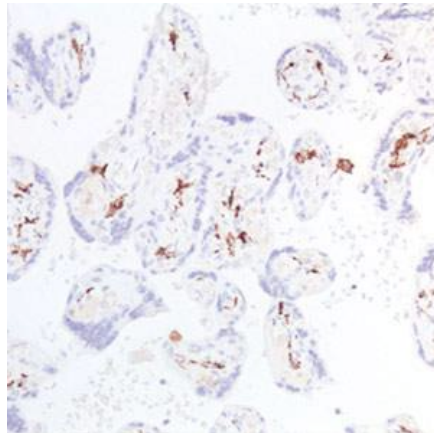
**Ig Class:** Rabbit IgG

**Storage:** Store vial at 4°C. When stored at 2-8°C, this antibody is stable for 24 months

**Staining procedures:** Use formalin-fixed and paraffin-embedded sections. *Retrieval conditions:* Pretreatment of deparaffinized tissue with heat-induced epitope retrieval is recommended. *Detection methods:* Polymer anti-mouse/rabbit Ig detection system. *Working dilution:* 1:50-100. *Positive Control:* Liver. *Cellular Localization:* Cytoplasmic and membrane. *Intended Use:* In vitro diagnosis (IVD).

**Description:** CD163 is an acute phase-regulated receptor involved in the clearance and endocytosis of hemoglobin/haptoglobin complexes by macrophages, thereby protecting tissues from free hemoglobin-mediated oxidative damage. Expression of CD163 is restricted to cells of the monocyte/macrophage lineage. This antibody labels monocytes and macrophages in the spleen and peripheral blood. The CD163 antibody might be used for identifying tumors of monocytic origin.

**Supplied As:** Tissue culture supernatant with 0.2% BSA and 15mM sodium azide.

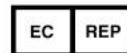


*Formalin-fixed, paraffin-embedded placenta stained with anti-CD163 antibody using peroxidase-conjugate and DAB chromogen. Note membrane staining of Kupffer's cells*

**Cat. #Z2508 (1.0 ml)**

---

**ZETA** Corporation  
65 N 1<sup>st</sup> Ave, Ste 202C  
Arcadia, CA 91006, USA  
Tel: (626) 355-2053  
<http://www.zeta-corp.com>



Zeta Corporation

**Emergo Europe B.V.**  
Prinsessegracht 20  
2514 AP The Hague  
The Netherlands  
Tel: +31 70 345 8570