

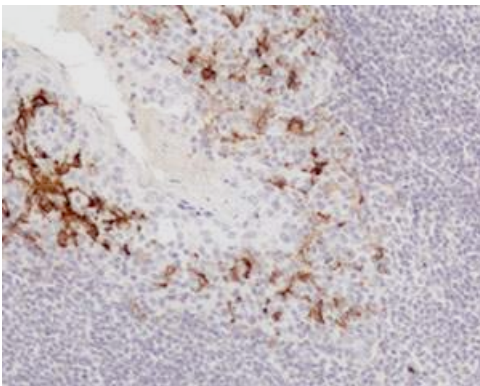
CD16 (Clone Ep364) Rabbit Monoclonal Antibody

Specificity:	Human. Others-not tested
Immunogen:	Recombinant fragment within Human CD16 C-terminus
Ig Class:	Rabbit IgG
Storage:	Store vial at 4°C. When stored at 2-8°C, this antibody is stable for 24 months

Staining procedures: Use formalin-fixed and paraffin-embedded sections. *Retrieval conditions:* Pretreatment of deparaffinized tissue with heat-induced epitope retrieval is recommended. *Detection methods:* Polymer anti-mouse/rabbit Ig detection system. *Working dilution:* 1:50; *Positive Control:* Bone marrow. *Cellular Localization:* Cytoplasmic. *Intended Use:* In vitro diagnosis (IVD).

Description: CD16 is a biomarker associated with monocytes and natural killer (NK) cells of the lymphoid lineage. Anti-CD16 immunohistochemistry is useful in differentially diagnosing hepatosplenic gamma delta T-cell lymphoma and gamma delta T-cell large granular lymphocyte leukemia from other peripheral T-cell lymphomas, such as mucosal and cutaneous gamma delta T-cell lymphoma. A significant decrease can be seen in the number of granulocytes expressing CD16 in chronic myelomonocytic leukemia compared to chronic myelogenous leukemia and control bone marrow biopsy, probably related to dysgranulopoiesis. Bone marrow biopsy immunohistochemistry can be helpful in CMML by identifying both the monocyte expansion and the dysgranulopoiesis with anti-CD16.

Supplied As: Purified antibody with 0.2% BSA and 15mM sodium azide.



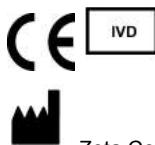
References:

1. Liang X, et al. *Cancer*. 2008; 112:1425-36.
2. Mandelboim O, et al. *Proc Natl Acad Sci U S A*. 1999; 96:5640-4.

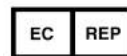
Formalin-fixed, paraffin-embedded human tonsil stained with anti-CD16 antibody using peroxidase-conjugate and DAB chromogen. Note cytoplasmic staining of dendritic cells

Cat. #Z2525 (1.0 ml)

ZETA Corporation
65 N 1st Ave, Ste 202C
Arcadia, CA 91006, USA
Tel: (626) 355-2053
<http://www.zeta-corp.com>



Zeta Corporation



Emergo Europe B.V.
Prinsessegracht 20
2514 AP The Hague
The Netherlands
Tel: +31 70 345 8570