
CD15 (Clone ZM82)

Mouse Monoclonal Antibody

Specificity: Human. Others-not tested

Immunogen: Purified human neutrophils

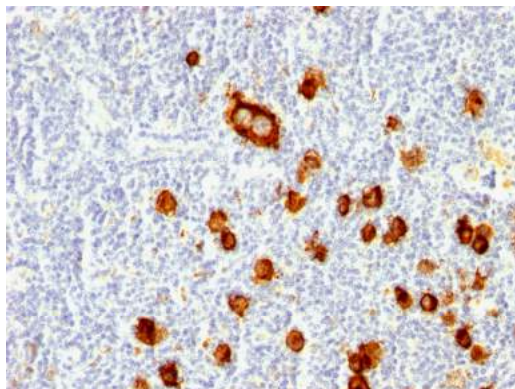
Ig Class: IgM/ κ

Storage: Store vial at 4°C. When stored at 2-8°C, this antibody is stable for 24 months

Staining procedures: Use formalin-fixed and paraffin-embedded sections. *Retrieval conditions:* Pretreatment of deparaffinized tissue with heat-induced epitope retrieval is recommended. *Detection methods:* Polymer anti-mouse/rabbit immunoglobulin detection system. *Working dilution:* 1:100-200. *Positive Control:* Hodgkin lymphoma. *Cellular Localization:* Cell membrane and granular perinuclear. *Intended Use:* In vitro diagnosis (IVD).

Description: CD15 plays a role in mediating phagocytosis, bactericidal activity, and chemotaxis. It is present on >95% of granulocytes including neutrophils and eosinophils and to a lesser degree on monocytes. In addition, CD15 is expressed in Reed-Sternberg cells and some epithelial cells. CD15 antibody is very useful in the identification of Hodgkin's disease. CD15 is occasionally expressed in large cell lymphomas of both B and T phenotypes which otherwise have a quite distinct histological appearance.

Supplied As: Purified antibody in 0.2% BSA and 15mM sodium azide.



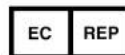
Formalin-fixed, paraffin-embedded human Hodgkin lymphoma stained with anti-CD15 antibody using peroxidase conjugate and DAB chromogen. Note membranous staining of Reed-Sternberg cells

Cat. #Z2391 (1.0 ml)

ZETA Corporation
65 N 1st Ave, Ste 202C
Arcadia, CA 91006, USA
Tel: (626) 355-2053
<http://www.zeta-corp.com>



Zeta Corporation



Emergo Europe B.V.
Prinsessegracht 20
2514 AP The Hague
The Netherlands
Tel: +31 70 345 8570