

---

## CD15 (Clone MMA)

### Mouse Monoclonal Antibody

**Specificity:** Human. Others-not tested

**Immunogen:** Glycoprotein fraction of human lymphocytes

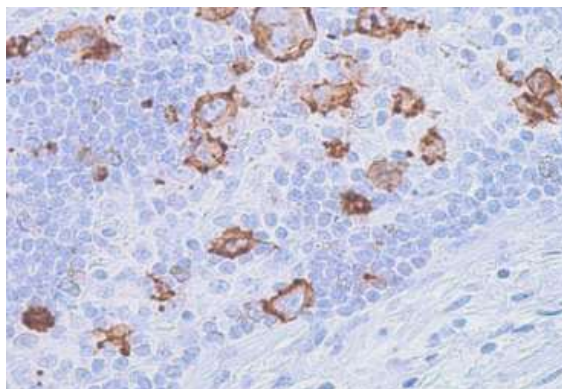
**Ig Class:** IgM

**Storage:** Store vial at 4°C. When stored at 2-8°C, this antibody is stable for 24 months

**Staining procedures:** Use formalin-fixed and paraffin-embedded sections. *Retrieval conditions:* Pretreatment of deparaffinized tissue with heat-induced epitope retrieval is recommended. *Detection methods:* Polymer anti-mouse/rabbit immunoglobulin detection system. *Working dilution:* 1:100-200. *Positive Control:* Hodgkin lymphoma. *Cellular Localization:* Cell membrane and granular perinuclear. *Intended Use:* In vitro diagnosis (IVD).

**Description:** 3-fucosyl-N-acetyllactosamine (3-FAL) or CD15 or X-hapten plays a role in mediating phagocytosis, bactericidal activity, and chemotaxis. It is present on >95% of granulocytes including neutrophils and eosinophils and to a lesser degree on monocytes. CD15 is also expressed in Reed-Sternberg cells and some epithelial cells. CD15 antibody is very useful in the identification of Hodgkin's disease. CD15 is occasionally expressed in large cell lymphomas of both B and T phenotypes which otherwise have a quite distinct histological appearance.

**Supplied As:** Purified antibody in 0.2% BSA and 15mM sodium azide.

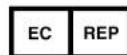


*Formalin-fixed, paraffin-embedded human Hodgkin lymphoma stained with anti-CD15 antibody using peroxidase conjugate and DAB chromogen. Note membranous staining of Reed-Sternberg cells*

Cat. #Z2028 (1.0 ml)

---

**ZETA** Corporation  
65 N 1<sup>st</sup> Ave, Ste 202C  
Arcadia, CA 91006, USA  
Tel: (626) 355-2053  
<http://www.zeta-corp.com>



Zeta Corporation

**Emergo Europe B.V.**  
Prinsessegracht 20  
2514 AP The Hague  
The Netherlands  
Tel: +31 70 345 8570