

CD14 (Clone EP128, as same as EPR3653) Rabbit Monoclonal Antibody

Specificity: Human. Others not tested

Immunogen: A synthetic peptide corresponding to residues in human CD14

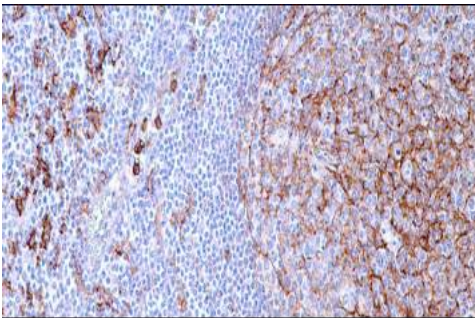
Ig Class: Rabbit IgG

storage: Store vial at 4°C. When stored at 2-8°C, this antibody is stable for 24 months

Staining procedures: Use formalin-fixed and paraffin-embedded sections. *Retrieval conditions:* Pretreatment of deparaffinized tissue with heat-induced epitope retrieval is recommended. *Detection methods:* Polymer anti-mouse/rabbit Ig detection system. *Working dilution:* 1:50-100. *Positive Control:* Tonsil or lymph node. *Cellular Localization:* Membrane and cytoplasmic. *Intended Use:* In vitro Diagnosis (IVD).

Description: CD14 is a surface protein preferentially expressed on monocytes/macrophages. It binds lipopolysaccharide binding protein and recently has been shown to bind apoptotic cells. Anti-CD14 antibody labels Kupffer cells in liver sinusoids. In lymphoid tissues, dendritic cells are distinctly stained. Most other normal tissues are negative. This antibody labels monocyte-macrophages and Langerhans cells in Langerhans cell histiocytosis. Tumor cells are positive in monocytic leukemia and true histiocytic lymphomas for CD14. Sinusoidal histiocytes express CD14 and CD 169, whereas most of the other monocyte-derived cells in reactive lymph node lack these markers. Anti-CD14 labels numerous diffuse large B-cell lymphomas and splenic marginal zone lymphoma but not in other B-cell lymphomas.

Supplied As: Purified antibody with 0.2% BSA and 15mM sodium azide.



References:

1. Gregory CD, et al. *Science*. 1990; 249:1431-33.
2. Marmey B, et al. *Hum Pathol*. 2006; 37:68-77.
3. Rollins-Raval MA, et al. *Histopathology*. 2012; 60:933-42.

Formalin-fixed, paraffin-embedded human lymph node stained with anti-CD14 antibody using peroxidase-conjugate and DAB chromogen. Note cytoplasmic and membrane staining of Langerhan cells (in follicle) and histiocytes in perifollicular region

Cat. #Z2203 (1 ml)

ZETA Corporation
65 N 1st Ave, Ste 202C
Arcadia, CA 91006, USA
Tel: (626) 355-2053
<http://www.zeta-corp.com>



Zeta Corporation

Emergo Europe B.V.
Prinsessegracht 20
2514 AP The Hague
The Netherlands
Tel: +31 70 345 8570