

---

## CD138 (Clone B-A38)

### Mouse Monoclonal Antibody

**Specificity:** Human. Others not tested

**Immunogen:** Recombinant protein encoding aa 18-218 human CD138

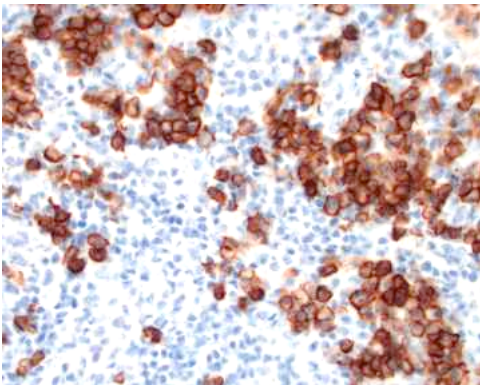
**Ig Class:** IgG1

**Storage:** Store vial at 4°C. When stored at 2-8°C, this antibody is stable for 24 months

**Staining procedures:** Use formalin-fixed and paraffin-embedded sections. *Retrieval conditions:* Pretreatment of deparaffinized tissue with heat-induced epitope retrieval is recommended. *Detection methods:* Polymer anti-mouse/rabbit Ig detection system. *Working dilution:* 1:20-100. *Positive Control:* Tonsil. *Cellular Localization:* Cell membrane/cytoplasmic. *Intended Use:* In vitro diagnosis (IVD).

**Description:** CD138 / Syndecan-1 is a transmembrane heparin sulphate proteoglycan which is made up of one core protein and five glycosaminoglycan. CD138 is expected to play a role in cell adhesion. It is expressed on the surface of pre-B cells and plasma cells but is absent from mature B cells. It is a selective marker for B cell lymphoblastic leukemia and lymphoplasmocytoid leukemia. It is lost from the apoptotic myeloma cells; hence is a useful marker for viable myeloma cells.

**Supplied As:** Purified antibody with 0.2% BSA and 15mM sodium azide.



#### References:

1. Bayer-Garner IB, et al. *Mod Pathol.* 2001; 14:1052-8.
2. O'Connell FP, et al. *Am J Clin Pathol.* 2004; 121:254-63.
3. Colomo L, et al. *Am J Surg Pathol.* 2004; 28:736-47.

*Formalin-fixed, paraffin-embedded human plasmablastic diffuse large cell lymphoma stained with anti-CD138 antibody using peroxidase-conjugate and DAB chromogen. Note the cytoplasmic staining of tumor cells*

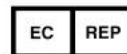
Cat. #Z2116 (1.0 ml)

---

**ZETA** Corporation  
65 N 1<sup>st</sup> Ave, Ste 202C  
Arcadia, CA 91006, USA  
Tel: (626) 355-2053  
<http://www.zeta-corp.com>



Zeta Corporation



**Emergo Europe B.V.**  
Prinsessegracht 20  
2514 AP The Hague  
The Netherlands  
Tel: +31 70 345 8570