
CD138 (Clone B-A38)

Mouse Monoclonal Antibody

Specificity: Human. Others not tested

Immunogen: Recombinant protein encoding aa 18-218 human CD138

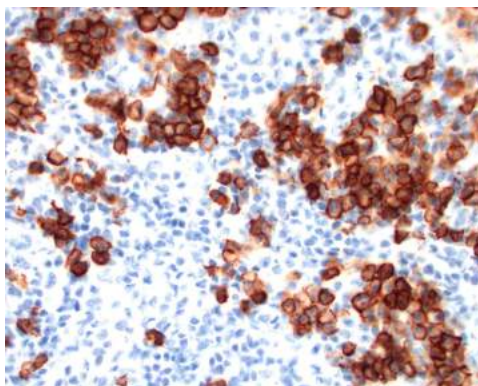
Ig Class: IgG1

Storage: Store vial at 4°C. When stored at 2-8°C, this antibody is stable for 24 months

Staining procedures: Use formalin-fixed and paraffin-embedded sections. *Retrieval conditions:* Pretreatment of deparaffinized tissue with heat-induced epitope retrieval is recommended. *Detection methods:* Polymer anti-mouse/rabbit Ig detection system. *Working dilution:* 1:20-100. *Positive Control:* Tonsil. *Cellular Localization:* Cell membrane/cytoplasmic. *Intended Use:* In vitro diagnosis (IVD).

Description: CD138 / Syndecan-1 is a transmembrane heparin sulphate proteoglycan which is made up of one core protein and five glycosaminoglycan. CD138 is expected to play a role in cell adhesion. It is expressed on the surface of pre-B cells and plasma cells but is absent from mature B cells. It is a selective marker for B cell lymphoblastic leukemia and lymphoplasmacytoid leukemia. It is lost from the apoptotic myeloma cells; hence is a useful marker for viable myeloma cells.

Supplied As: Purified antibody tissue culture supernatant with 0.2% BSA and 15mM sodium azide.



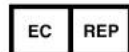
Formalin-fixed, paraffin-embedded human plasmablastic diffuse large cell lymphoma stained with anti-CD138 antibody using peroxidase-conjugate and DAB chromogen. Note the cytoplasmic staining of tumor cells

Cat. #Z2116 (1.0 ml)

ZETA Corporation
65 N 1st Ave, Ste 202C
Arcadia, CA 91006, USA
Tel: (626) 355-2053
<http://www.zeta-corp.com>



Zeta Corporation



Emergo Europe B.V.
Prinsessegracht 20
2514 AP The Hague
The Netherlands
Tel: +31 70 345 8570