

---

## CD10 (Clone SP67)

### Rabbit Monoclonal Antibody

**Specificity:** Human and Rat. Others-not tested

**Immunogen:** A synthetic peptide corresponding to human CD10

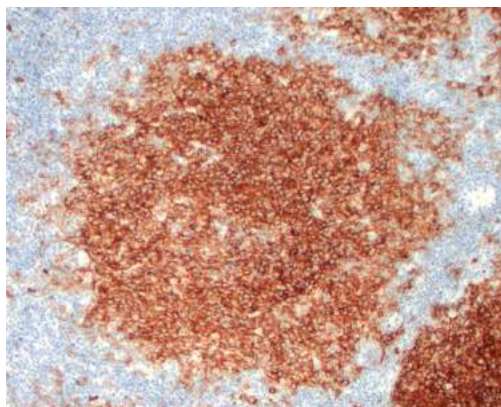
**Ig Class:** Rabbit IgG

**Storage:** Store vial at 4°C. When stored at 2-8°C, this antibody is stable for 24 months

**Staining procedures:** Use formalin-fixed and paraffin-embedded sections. *Retrieval conditions:* Pretreatment of deparaffinized tissue with heat-induced epitope retrieval is recommended. *Detection methods:* Polymer anti-mouse/rabbit Ig detection system. *Working dilution:* 1:50. *Positive Control:* Follicular lymphoma, lymph node. *Cellular Localization:* Membrane. *Intended Use:* In vitro diagnosis (IVD).

**Description:** CD10, also known as Common Acute Lymphocytic Leukemia Antigen (CALLA), is a cell surface enzyme with neutral metalloendopeptidase activity which inactivates a variety of biologically active peptides. CD10 is expressed on the cells of lymphoblastic, Burkitt's, and follicular germinal center lymphomas, and on cells from patients with chronic myelocytic leukemia (CML). It is also expressed on the surface of normal early lymphoid progenitor cells, immature B cells within adult bone marrow and germinal center B cells within lymphoid tissue. CD10 is also present on breast myoepithelial cells, bile canaliculi, fibroblasts, with especially high expression on the brush border of kidney and gut epithelial cells.

**Supplied As:** Tissue culture supernatant in 0.2% BSA and 15mM sodium azide.



*Formalin-fixed, paraffin-embedded human follicular lymphoma stained with anti-CD10 antibody using peroxidase-conjugate and DAB chromogen. Note strong membranous staining of lymphoma cells*

**Cat. #Z2098 (1.0 ml)**

---

**ZETA** Corporation  
65 N 1<sup>st</sup> Ave, Ste 202C  
Arcadia, CA 91006, USA  
Tel: (626) 355-2053  
<http://www.zeta-corp.com>



Zeta Corporation

**Emergo Europe B.V.**  
Prinsessegracht 20  
2514 AP The Hague  
The Netherlands  
Tel: +31 70 345 8570