
CD10/CALLA (Clone 56C6)

Mouse Monoclonal Antibody

Specificity: Human and Rat. Others-not tested

Immunogen: Recombinant external domain of CD10 protein

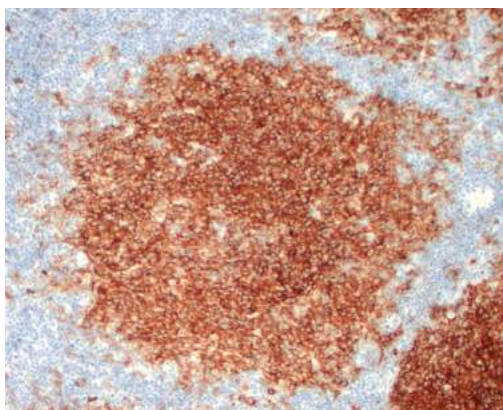
Ig Class: IgG1

Storage: Store vial at 4°C. When stored at 2-8°C, this antibody is stable for 24 months

Staining procedures: Use formalin-fixed and paraffin-embedded sections. *Retrieval conditions:* Pretreatment of deparaffinized tissue with heat-induced epitope retrieval is recommended. *Detection methods:* Polymer anti-mouse/rabbit Ig detection system. *Working dilution:* 1:10-50. *Positive Control:* Follicular lymphoma, lymph node. *Cellular Localization:* Membrane. *Intended Use:* In vitro diagnosis (IVD).

Description: CD10, also known as Common Acute Lymphocytic Leukemia Antigen (CALLA), is a cell surface enzyme with neutral metalloendopeptidase activity which inactivates a variety of biologically active peptides. CD10 is expressed on the cells of lymphoblastic, Burkitt's, and follicular germinal center lymphomas, and on cells from patients with chronic myelocytic leukemia (CML). It is also expressed on the surface of normal early lymphoid progenitor cells, immature B cells within adult bone marrow and germinal center B cells within lymphoid tissue. CD10 is also present on breast myoepithelial cells, bile canaliculi, fibroblasts, with especially high expression on the brush border of kidney and gut epithelial cells.

Supplied As: Tissue culture supernatant in 0.2% BSA and 15mM sodium azide.



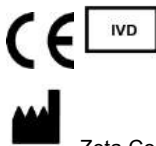
References:

1. Maguer-Satta V, et al. *Stem Cells*. 2011; 29:389-96.
2. Onak NK, et al. *Turk J Med Sci*. 2010; 40:177-84.
3. Chu P, et al. *Am J Clin Pathol*. 2000; 113: 374-82.

Formalin-fixed, paraffin-embedded human follicular lymphoma stained with anti-CD10 antibody using peroxidase-conjugate and DAB chromogen. Note strong membranous staining of lymphoma cells

Cat. #Z2098M (1.0 ml)

ZETA Corporation
65 N 1st Ave, Ste 202C
Arcadia, CA 91006, USA
Tel: (626) 355-2053
<http://www.zeta-corp.com>



Zeta Corporation



Emergo Europe B.V.
Prinsessegracht 20
2514 AP The Hague
The Netherlands
Tel: +31 70 345 8570