
CA125 (Clone EP48, as same as EPR1020 (2))

Rabbit Monoclonal Antibody

Specificity: Human. Others-not tested

Immunogen: A synthetic peptide corresponding to residues in human CA 125

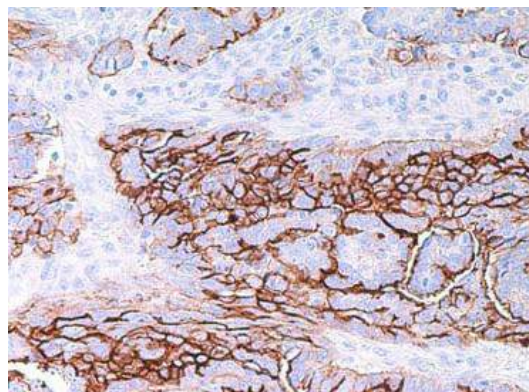
Ig Class: Rabbit IgG

Storage: Store vial at 4°C. When stored at 2-8°C, this antibody is stable for 24 months

Staining procedures: Use formalin-fixed and paraffin-embedded sections. *Retrieval conditions:* Pretreatment of deparaffinized tissue with heat-induced epitope retrieval is recommended. *Detection methods:* Polymer anti-mouse/rabbit Ig detection system. *Working dilution:* 1:50-100; *Positive Control:* Ovarian carcinoma. *Cellular Localization:* Extracellular membrane-associated. *Intended Use:* In vitro diagnosis (IVD).

Description: As CA125 (Ovarian Cancer Antigen) is a tumor marker usually associated with ovarian epithelial malignancies. Serum assays are widely used to detect this protein in the monitoring of ovarian cancers. However, CA125 antigen may also be detected by immunohistochemistry and expression has been found in neoplasms such as seminal vesicle carcinoma and anaplastic lymphoma. CA125 antigen is not exclusively found in malignant tumors.

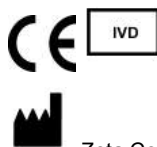
Supplied As: Purified antibody with 0.2% BSA and 15mM sodium azide.



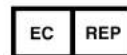
Formalin-fixed, paraffin-embedded human ovarian carcinoma stained with anti-CA125 antibody using peroxidase-conjugate and DAB chromogen. Note cell membrane staining of tumor cells

Cat. #Z2020 (1.0 ml)

ZETA Corporation
65 N 1st Ave, Ste 202C
Arcadia, CA 91006, USA
Tel: (626) 355-2053
<http://www.zeta-corp.com>



Zeta Corporation



Emergo Europe B.V.
Prinsessegracht 20
2514 AP The Hague
The Netherlands
Tel: +31 70 345 8570