

---

# C4d

## Rabbit Polyclonal Antibody

**Species Reactivity:** Human. Others not tested

**Immunogen:** Synthetic peptide corresponding to C4d

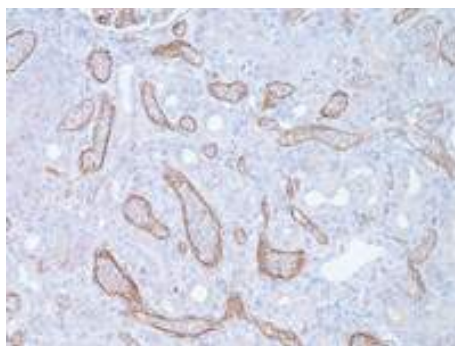
**Ig Class:** Rabbit IgG

**Storage:** Store vial at 4°C. When stored at 2-8°C, this antibody is stable for 24 months

**Staining procedures:** Use formalin-fixed and paraffin-embedded sections. *Retrieval conditions:* Pretreatment of deparaffinized tissue with heat-induced epitope retrieval is recommended. *Detection methods:* Polymer anti-mouse/rabbit IgG detection system. *Working dilution:* 1:50; *Positive Control:* Acute rejected kidney transplant. *Cellular Localization:* Membrane or cytoplasmic. *Intended Use:* In vitro Diagnosis (IVD).

**Description:** C4d is a stable split product remnant of classical complement activation, which becomes covalently bound to endothelium and basement membrane, after induction of the classical antibody-induced pathway. As an established marker of antibody-mediated acute renal allograft rejection and its proclivity for endothelium, this component can be detected in peritubular capillaries in both chronic renal allograft rejection as well as hyperacute rejection, acute vascular rejection, acute cellular rejection, and borderline rejection. It has been shown to be a significant predictor of transplant kidney graft survival and is an aid in treating acute rejection.

**Supplied As:** Purified antibody with 0.2% BSA and 15mM sodium azide.



*Formalin-fixed, paraffin-embedded human rejected kidney stained with anti-C4d antibody using peroxidase-conjugate and AEC chromogen. Note basement membrane/cytoplasmic staining of renal tubules*

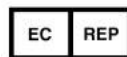
**Cat #: Z2210 (1.0 ml)**

---

**ZETA** Corporation  
65 N 1<sup>st</sup> Ave, Ste 202C  
Arcadia, CA 91006, USA  
Tel: (626) 355-2053  
<http://www.zeta-corp.com>



Zeta Corporation



**Emergo Europe B.V.**  
Prinsessegracht 20  
2514 AP The Hague  
The Netherlands  
Tel: +31 70 345 8570