

C3d

Rabbit Polyclonal Antibody

Species Reactivity: Human. Others not tested

Immunogen: Synthetic peptide corresponding to C3d

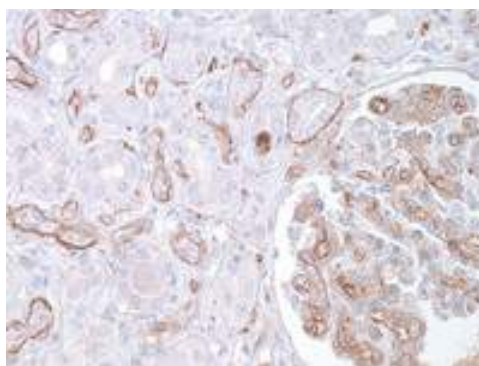
Ig Class: Rabbit IgG

Storage: Store vial at 4°C. When stored at 2-8°C, this antibody is stable for 24 months

Staining procedures: Use formalin-fixed and paraffin-embedded sections. *Retrieval conditions:* Pretreatment of deparaffinized tissue with heat-induced epitope retrieval is recommended. *Detection methods:* Polymer anti-mouse/rabbit IgG detection system. *Working dilution:* 1:50-200; *Positive Control:* Acute rejected kidney transplant. *Cellular Localization:* Membrane or cytoplasmic. *Intended Use:* In vitro Diagnosis (IVD).

Description: Complement component C3 plays a central role in the activation of complement system. Its activation is required for both classical and alternative complement activation pathways. C3d deposition in the renal transplant PTCs (peritubular capillaries) is indicative of AR (acute rejection) with subsequent high probability of graft loss. Anti-C3d, combined with anti-C4d, can be utilized as a tool for diagnosis of AR and warrant prompt and aggressive anti-rejection treatment. It was shown that anti-C3d labeled the epidermal basement membrane in 97% cases of bullous pemphigoid, with none of the normal controls demonstrating such findings. 27% cases of pemphigus vulgaris demonstrate intercellular C3d deposition. Therefore, C3d immunohistochemistry is a helpful adjunct in the diagnosis of bullous pemphigoid (and perhaps pemphigus vulgaris), especially in the cases in which only formalin-fixed, paraffin embedded tissue is available for analysis.

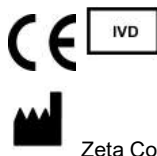
Supplied As: Purified antibody with 0.2% BSA and 15mM sodium azide.



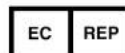
Formalin-fixed, paraffin-embedded human transplanted kidney stained with anti-C3d antibody using peroxidase-conjugate and DAB chromogen. Note basement membrane staining of renal tubules and glomeruli

Cat #: Z2209 (1.0 ml)

ZETA Corporation
65 N 1st Ave, Ste 202C
Arcadia, CA 91006, USA
Tel: (626) 355-2053
<http://www.zeta-corp.com>



Zeta Corporation



Emergo Europe B.V.
Prinsessegracht 20
2514 AP The Hague
The Netherlands
Tel: +31 70 345 8570