

---

## Basal cell Cocktail (p63+HMW CK) (Clones ZM70+34 $\beta$ E12) Mouse Monoclonal Antibodies

**Specificity:** Human, others not tested

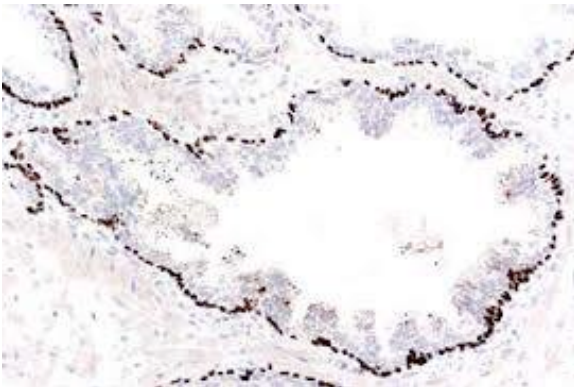
**Ig Class:** IgG1 and IgG2a/ $\kappa$

**Storage:** Store vial at 4°C. When stored at 2-8°C, this antibody is stable for 24 months

**Staining procedures:** Use formalin-fixed and paraffin-embedded sections. *Retrieval conditions:* Pretreatment of deparaffinized tissue with heat-induced epitope retrieval is recommended. *Detection methods:* Polymer anti-mouse/rabbit IgG detection system. *Working dilution:* 1:50. *Positive Control:* Prostate carcinoma. *Localization:* Nuclear and cytoplasmic. *Intend use:* In vitro diagnosis (IVD).

**Application:** The p63 protein, a homologue of the tumor-suppressor p53, is highly expressed in the basal or progenitor layer of many epithelial tissues. P63 is detected in prostate basal cells in normal prostate glands and PIN. However, it is negative in prostate adenocarcinoma. Thus p63 is useful as a differential marker for benign prostate glands and adenocarcinoma (negative marker). High molecular weight keratin (HMW CK) clone 34 $\beta$ E12 antibody recognizes keratin 1, 5, 10, and 14 in the Moll catalog (MW 68kDa, 58kDa, 56.5kDa, and 50kDa), respectively. Keratin 34 $\beta$ E12 antibody promises to be a specific marker useful in differential diagnosis of benign and malignant tumors of prostatic gland. The combination of HMW CK 34 $\beta$ E12 and p63 is extremely useful for diagnosing prostate adenocarcinoma.

**Supplied As:** Purified antibody with 0.2% BSA and 15mM sodium azide.



### References:

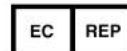
1. Tacha DE, et al. *Appl Immunohistochem Mol Morphol.* 2004;12:75-8.
2. Signoretti S, et al. *Am J Pathol* 2000; 157:1769-75.
3. Collins AT, et al. *J Cell Sci.* 2001;114:3865-72.

*Formalin-fixed, paraffin-embedded human normal prostate tissue stained with 4A4 and 34 $\beta$ E12 antibodies using peroxidase-conjugate and DAB chromogen. Note cytoplasmic and nuclear staining of basal cells*

**Cat. # Z2304 (1.0 ml, concentrate)**

---

**ZETA Corporation**  
65 N 1<sup>st</sup> Ave, Ste 202C  
Arcadia, CA 91006, USA  
Tel: (626) 355-2053  
<http://www.zeta-corp.com>



Zeta Corporation

**Emergo Europe B.V.**  
Prinsessegracht 20  
2514 AP The Hague  
The Netherlands  
Tel: +31 70 345 8570