
BRCA-1(Clone MS110)

Mouse Monoclonal Antibody

Specificity: Human. Others-not known

Immunogen: BRCA-1

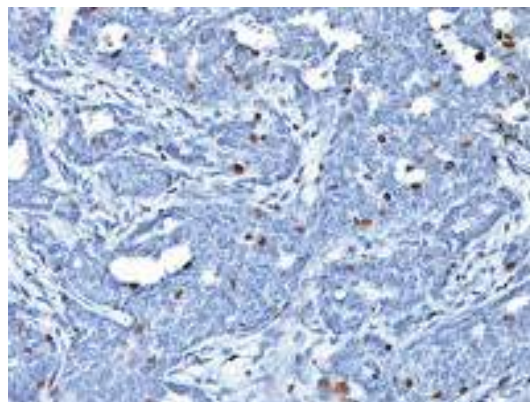
Ig Class: IgG₁

Storage: Store vial at 4°C. When stored at 2-8°C, this antibody is stable for 24 months

Staining procedures: Use formalin-fixed and paraffin-embedded sections. *Retrieval conditions:* Pretreatment of deparaffinized tissue with heat-induced epitope retrieval is recommended. *Detection methods:* Polymer anti-mouse/rabbit IgG detection system. *Working dilution:* 1:50-100; *Positive Control:* Breast carcinoma with *BRCA-1* gene mutation. *Cellular Localization:* Nuclear. *Intended Use:* In vitro diagnosis (IVD).

Description: The *BRCA-1* gene codes for a nuclear phosphoprotein that plays a role in maintaining genomic stability and acts as a tumor suppressor. The normal gene plays a role in repairing breaks in DNA. If a mutation occurs in this gene the repair function may become disabled thus leading to more DNA replication errors and neoplastic growth. Current findings suggest that *BRCA-1* may play an as yet undefined protective role in cells, as it is strongly expressed in epithelial cells undergoing high levels of proliferation in association with differentiation. Additional findings have determined that complete loss of *BRCA-1* nuclear expression in breast cancer and the correlation with poor prognostic markers imply that the altered *BRCA-1* phenotype may provide an added prognostic parameter for breast cancer and could be applied for a potential rapid screening technique to identify *BRCA-1* mutations.

Supplied As: Purified antibody with 0.2% BSA and 15mM sodium azide.



Formalin-fixed, paraffin-embedded human breast carcinoma stained with anti-BRCA-1 antibody using peroxidase-conjugate and DAB chromogen. Note nuclear staining of some breast carcinoma cells.

Cat. #Z2237 (1.0 ml)

ZETA Corporation
65 N 1st Ave, Ste 202C
Arcadia, CA 91006, USA
Tel: (626) 355-2053
<http://www.zeta-corp.com>



Zeta Corporation



Emergo Europe B.V.
Prinsessegracht 20
2514 AP The Hague
The Netherlands
Tel: +31 70 345 8570