
BOB.1 (SP92)

Rabbit Monoclonal Antibody

Specificity: Human. Others not known

Immunogen: Synthetic peptide corresponding to C-terminus of human Bob-1 protein

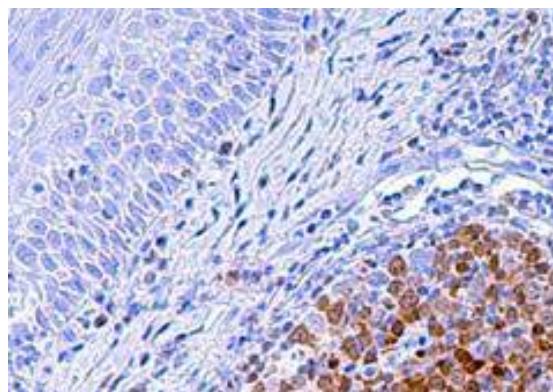
Ig Class: Rabbit IgG

Storage: Store vial at 4°C. When stored at 2-8°C, this antibody is stable for 24 months

Staining procedures: Use formalin-fixed and paraffin-embedded sections. *Retrieval conditions:* Pretreatment of deparaffinized tissue with heat-induced epitope retrieval is recommended. *Detection methods:* Polymer anti-mouse/rabbit IgG detection system. *Working dilution:* 1:50; *Positive Control:* Tonsil. *Cellular Localization:* Nuclear and cytoplasmic. *Intended Use:* In Vitro Diagnosis (IVD).

Description: B-cell-specific transcription of octamer-dependent promoters has been shown to require additional coactivators, which functionally interact with Oct1 and/or Oct2 transcription factors. The BOB.1/OBF.1 coactivator was shown to be a critical determinant of octamer-dependent gene transcription in B lymphocytes. Expression of BOB.1/OBF.1 is restricted largely to B lymphocytes. Various lymphomas are also positive for this marker including the following: B-Chronic lymphocytic leukemia, mantle cell lymphoma, follicular lymphoma, marginal zone lymphoma, plasmacytoma, Burkitt lymphoma, diffuse large cell lymphoma, diffuse large B-cell lymphoma, T-cell rich B-cell lymphoma, nodular lymphocyte predominant Hodgkin lymphoma, whereas classic Hodgkin lymphoma is usually negative.

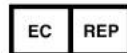
Supplied As: Purified antibody in 0.2% BSA and 15mM sodium azide.



Formalin-fixed, paraffin-embedded human skin with reactive lymphoid hyperplasia stained with anti-BOB.1 antibody using peroxidase-conjugate and DAB chromogen. Note nuclear and cytoplasmic staining of follicular center cells

Cat. #Z2260 (1.0 ml)

ZETA Corporation
65 N 1st Ave, Ste 202C
Arcadia, CA 91006, USA
Tel: (626) 355-2053
<http://www.zeta-corp.com>



Zeta Corporation

Emergo Europe B.V.
Prinsessegracht 20
2514 AP The Hague
The Netherlands
Tel: +31 70 345 8570