
BCL-6 (Clone ZM22) Mouse Monoclonal Antibody

Specificity: Human. Others-not tested

Immunogen: Recombinant human bcl-6 protein fragment (aa256-389) (exact sequence is proprietary)

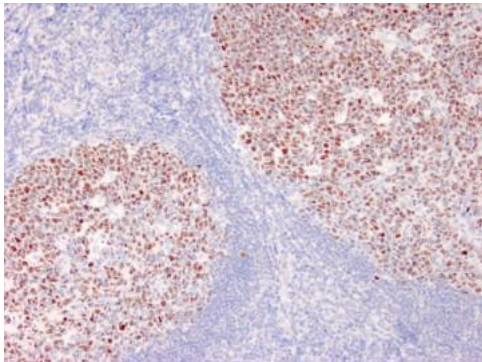
Ig Class: Mouse IgG1/κ

Storage: Store vial at 4°C. When stored at 2-8°C, this antibody is stable for 24 months

Staining procedures: Use formalin-fixed and paraffin-embedded sections. *Retrieval conditions:* For formalin-fixed tissues, optimal results are obtained by pretreating tissues with heat-induced epitope retrieval using high pH target retrieval solution. *Detection methods:* Polymer anti-mouse/rabbit IgG detection system. *Working dilution:* 1:100-200; *Positive Control:* Tonsil or diffuse large B-cell lymphoma. *Cellular Localization:* Nuclear. *Intended Use:* In vitro diagnosis (IVD).

Description: Recognizes a protein of 95kDa, which is identified as Bcl-6. Antibody to bcl-6 is helpful in a number of diagnostic settings: (1) In the differential diagnosis of small B-cell lymphoma. Follicular lymphoma will show bcl-6 (and CD10) positivity whereas other small B-cell lymphomas are usually negative. (2) Bcl-6 is an important prognostic marker in diffuse large B-cell lymphomas (DLBCL), where CD10, bcl-6 and MUM1/IRF4 are used to identify germinal center and activated B-cell phenotypes. (3) Bcl-6 can be valuable in distinguishing classical Hodgkin lymphoma from nodular lymphocyte predominant Hodgkin lymphoma (NLPHL). The Reed-Sternberg cells of classical Hodgkin lymphoma are bcl-6 negative whereas the large ("L&H") cells of NLPHL are bcl-6 positive. In contrast, anti-Bcl-6 rarely stains mantle-cell lymphoma and MALT lymphoma.

Supplied As: Purified antibody with 0.2% BSA and 15mM sodium azide.



References:

1. Falini B, et al. *Ann Oncol.* 1997; 2: 101-4.
2. Dogan A, et al. *Am J Surg Pathol.* 2000; 24:846-52.
3. Carbone A, et al. *Hum Pathol.* 2010; 41:621-31.

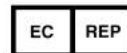
Formalin-fixed and paraffin-embedded human reactive lymph node stained with anti-BCL-6 antibody using peroxidase-conjugate and DAB chromogen. Note nuclear staining of follicular center B-cells

Cat. #Z2343 (1.0 ml)

ZETA Corporation
65 N 1st Ave, Ste 202C
Arcadia, CA 91006, USA
Tel: (626) 355-2053
<http://www.zeta-corp.com>



Zeta Corporation



Emergo Europe B.V.
Prinsessegracht 20
2514 AP The Hague
The Netherlands
Tel: +31 70 345 8570